

# Anti-IL22 antibody



Catalog Number: 175519

## Product name

Anti-IL22 antibody

## Specificity

Human, Mouse, Rat, Dog

## Antibody description

Rabbit polyclonal antibody to IL22

## Preparation

This antigen of this antibody was klh conjugated synthetic peptide derived from human il-22 35-179/179

## Formulation

Liquid, 0.01M TBS(pH7.4) with 1% BSA, 0.03% Proclin300 and 50% Glycerol.

## Storage

Store at -20°C for one year. Avoid repeated freeze/thaw cycles.

## Clonality

Polyclonal

## Ig Type

Rabbit IgG

## Applications

WB, IHC-P, FC

## Dilutions

WB:1:500-2000

IHC-P:1:400-800

FC:1µg /test

## Validations

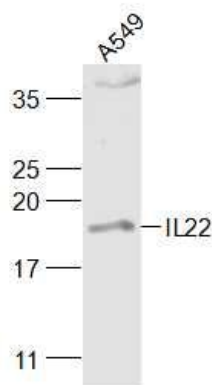


Fig1: Sample:; A549 (Human) Cell Lysate at 30 ug; Primary: Anti-IL22 at 1/1000 dilution; Secondary: IRDye800CW Goat Anti-Rabbit IgG at 1/20000 dilution; Predicted band size: 17 kD; Observed band size: 19 kD

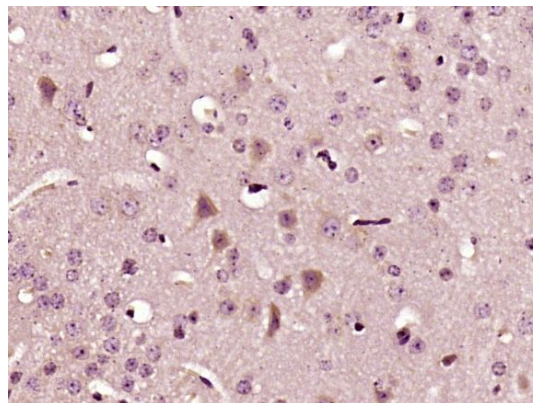
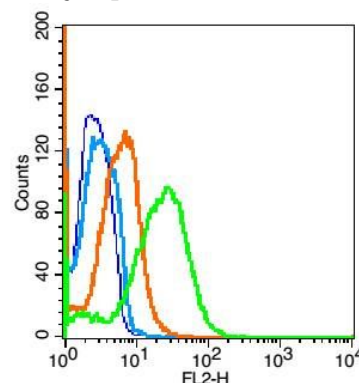


Fig2: Paraformaldehyde-fixed, paraffin embedded (Mouse brain); Antigen retrieval by boiling in sodium citrate buffer (pH6.0) for 15min; Block endogenous peroxidase by 3% hydrogen peroxide for 20 minutes; Blocking buffer (normal goat serum) at 37°C for 30min; Antibody incubation with (IL22) Polyclonal Antibody, Unconjugated at 1:400 overnight at 4°C, followed by a conjugated secondary antibody (sp-0023) for 20 minutes and



DAB staining.

Fig3: Blank control(blue): Mouse liver cells(fixed with 2% paraformaldehyde (10 min) , then permeabilized with 90% ice-cold methanol for 30 min on ice).; Primary Antibody: Rabbit Anti-IL22 antibody , Dilution: 1 $\mu$ g in 100  $\mu$ L 1X PBS

containing 0.5% BSA;; Isotype Control Antibody: Rabbit IgG (orange) ,used under the same conditions.; Secondary Antibody: Goat anti-rabbit IgG-PE (white blue), Dilution: 1:200 in 1 X PBS containing 0.5% BSA.