

ASAH1 antibody



Catalog Number: 108209

Product name

ASAH1 antibody

Recommended Dilution:

WB: 1:200-1:2000

Specificity

Human, Mouse, Rat; other species not tested.

IP: 1:200-1:1000

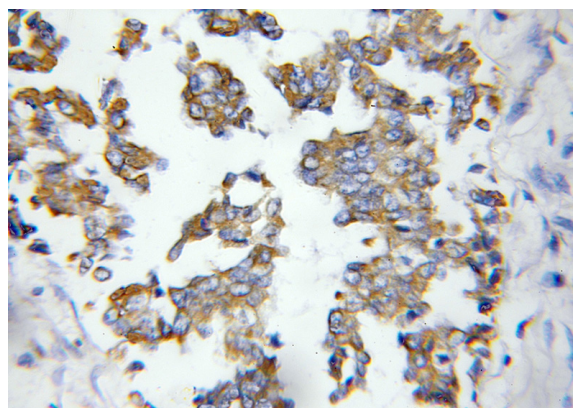
IHC: 1:20-1:200

Antibody description

ASAH1 Rabbit Polyclonal antibody. Positive IF detected in SH-SY5Y cells. Positive IHC detected in human breast cancer tissue. Positive WB detected in rat lung tissue, human lung tissue, mouse brain tissue, mouse heart tissue, SH-SY5Y cells. Positive IP detected in mouse brain tissue. Observed molecular weight by Western-blot: 60-65 kDa

IF: 1:10-1:100

Validations



Immunohistochemical of paraffin-embedded human breast cancer using Catalog No:108209(ASAH1 antibody) at dilution of 1:50

Preparation

This antibody was obtained by immunization of ASAH1 recombinant protein (Accession Number: NM_001127505). Purification method: Antigen affinity purified.

Formulation

PBS with 0.1% sodium azide and 50% glycerol pH 7.3.

Storage

Store at -20°C. DO NOT ALIQUOT

Clonality

Polyclonal

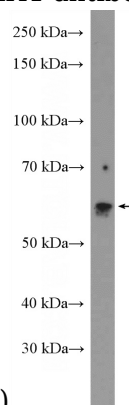
Ig Type

Rabbit IgG

Applications

ELISA, IHC, IF, WB, IP

Dilutions

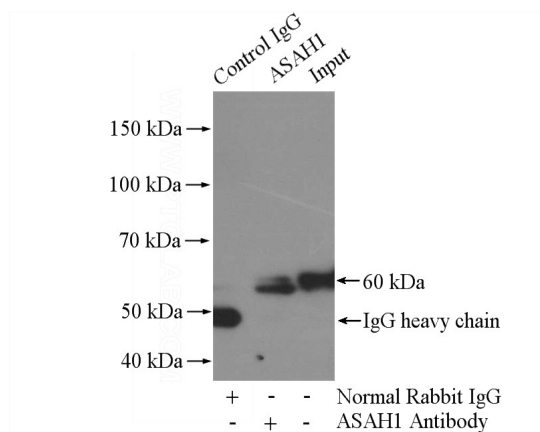


(under 40x lens)

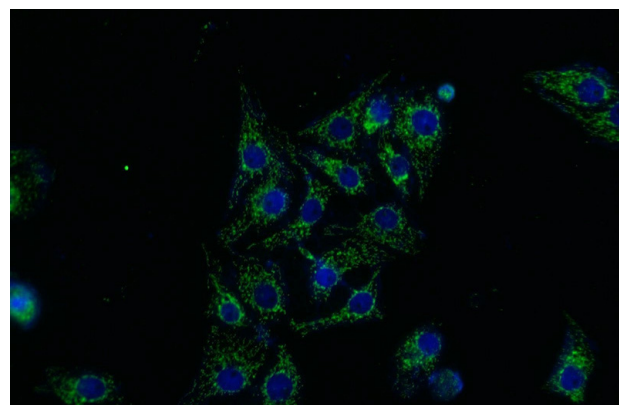
rat lung tissue were subjected to SDS PAGE followed by western blot with Catalog No:108209(ASAH1 Antibody) at dilution of 1:600

ASAH1 antibody

Catalog Number: 108209



IP Result of anti-ASAHI (IP:Catalog No:108209, 4ug; Detection:Catalog No:108209 1:300) with mouse brain tissue lysate 3200ug.



Immunofluorescent analysis of SH-SY5Y cells using Catalog No:108209(ASAHI Antibody) at dilution of 1:25 and Alexa Fluor 488-conjugated AffiniPure Goat Anti-Rabbit IgG(H+L)