

RPL3 antibody



Catalog Number: 107509

Product name

RPL3 antibody

Recommended Dilution:

WB: 1:500-1:5000

Immunogen

IHC: 1:20-1:200

[Human RPL3 Recombinant protein \(His tag\)](#)

IF: 1:20-1:200

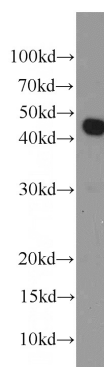
Specificity

Human; other species not tested.

Validations

Antibody description

RPL3 Mouse Monoclonal antibody. Positive WB detected in HEK-293 cells, HeLa cells, HepG2 cells. Positive IHC detected in human lung cancer tissue, human placenta tissue. Positive IF detected in HepG2 cells. Observed molecular weight by Western-blot: 46 kDa



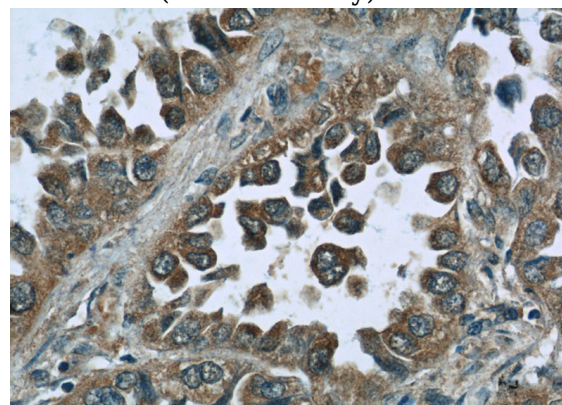
Preparation

This antibody was obtained by immunization of RPL3 recombinant protein (Accession Number: NM_000967). Purification method: Protein G purified.

HEK-293 cells were subjected to SDS PAGE followed by western blot with Catalog No:107509(RPL3 antibody) at dilution of 1:1000

Formulation

PBS with 0.02% sodium azide and 50% glycerol pH 7.3.



Storage

Store at -20°C. DO NOT ALIQUOT

Clonality

Monoclonal

Immunohistochemistry of paraffin-embedded human lung cancer slide using Catalog No:107509(RPL3 Antibody) at dilution of 1:50

Ig Type

Mouse IgG1

Applications

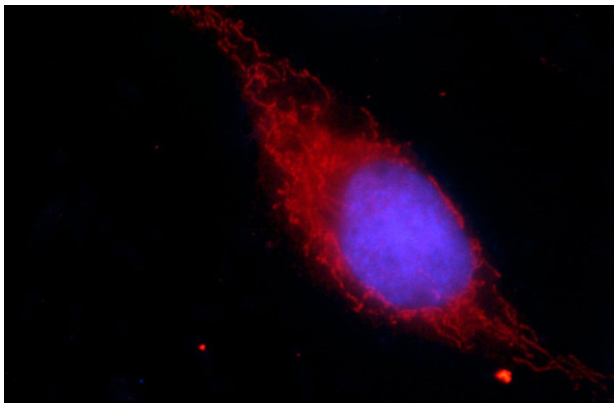
ELISA, WB, IHC, IF

Dilutions

RPL3 antibody



Catalog Number: 107509



Immunofluorescent analysis of HepG2 cells using Catalog No:107509(RPL3 Antibody) at dilution of 1:50 and Rhodamine-Goat anti-Mouse IgG