

MRPL10 antibody



Catalog Number: 112809

Product name

MRPL10 antibody

Recommended Dilution:

WB: 1:200-1:2000

Immunogen

[Human MRPL10 Recombinant protein \(GST tag & His tag\)](#)

IHC: 1:20-1:200

IF: 1:10-1:100

Specificity

human, mouse, rat; other species not tested.

Antibody description

MRPL10 Rabbit Polyclonal antibody. Positive IF detected in HepG2. Positive IHC detected in human testis. Positive WB detected in HEK-293 cells, HeLa cells. Observed molecular weight by Western-blot: 29kd

Preparation

This antibody was obtained by immunization of MRPL10 recombinant protein (Accession Number: NM_145255). Purification method: Antigen affinity purified.

Formulation

PBS with 0.02% sodium azide and 50% glycerol pH 7.3.

Storage

Store at -20°C. DO NOT ALIQUOT

Clonality

Polyclonal

Ig Type

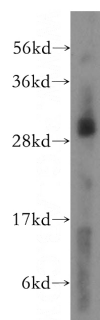
Rabbit IgG

Applications

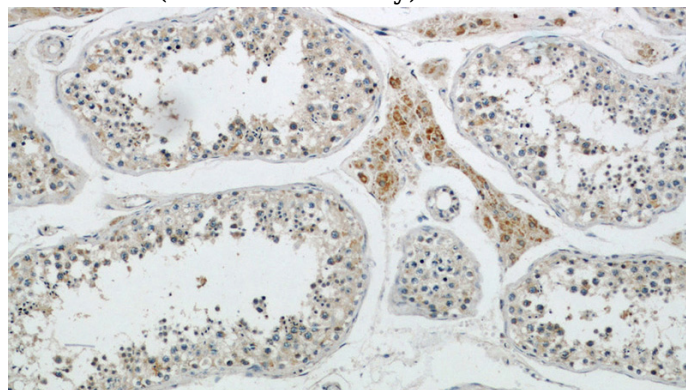
ELISA, WB, IHC, IF

Dilutions

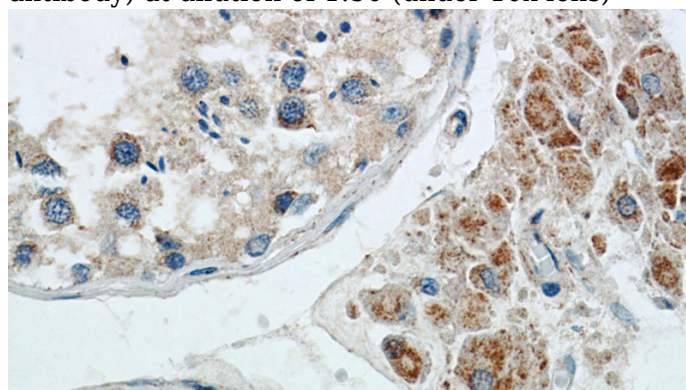
Validations



HEK-293 cells were subjected to SDS PAGE followed by western blot with Catalog No:112809(MRPL10 antibody) at dilution of 1:500



Immunohistochemical of paraffin-embedded human testis using Catalog No:112809(MRPL10 antibody) at dilution of 1:50 (under 10x lens)

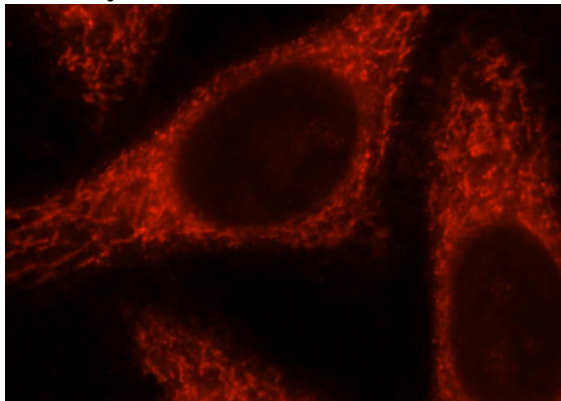


MRPL10 antibody



Catalog Number: 112809

Immunohistochemical of paraffin-embedded human testis using Catalog No:112809(MRPL10 antibody) at dilution of 1:50 (under 40x lens)



Immunofluorescent analysis of HepG2 cells, using MRPL10 antibody Catalog No:112809 at 1:25 dilution and Rhodamine-labeled goat anti-rabbit IgG (red).