

# Anti-SDHA Rabbit antibody



Catalog Number: 167009

## Product name

Anti-SDHA Rabbit antibody

FC: 1/20

IP: 1/20

## Specificity

Human, Mouse, Rat

## Validations

## Antibody description

SDHA Rabbit polyclonal antibody

## Preparation

Antigen: A synthetic peptide of human SDHA

## Formulation

Supplied in 50nM Tris-Glycine(pH 7.4), 0.15M NaCl, 40%Glycerol, 0.01% sodium azide and 0.05% BSA.

## Storage

Store at -20°C. Stable for 12 months from date of receipt.

## Clonality

Polyclonal

## Ig Type

Rabbit IgG

## Applications

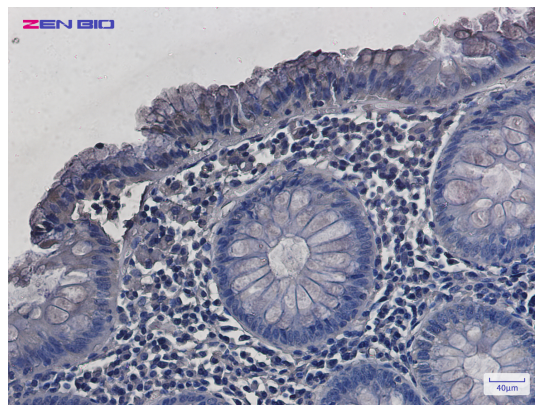
WB, IHC-P, ICC/IF, FC, IP

## Dilutions

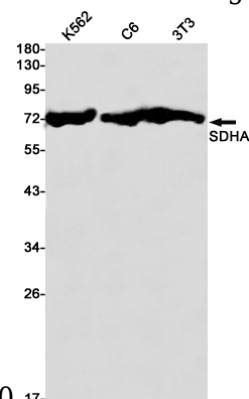
WB: 1/1000

IHC: 1/20-1/100

ICC/IF: 1/50

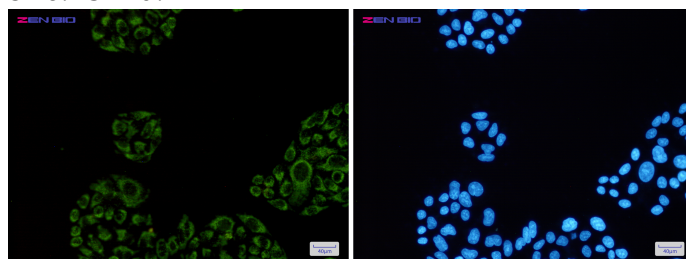


Immunohistochemistry of SDHA in paraffin-embedded Human colon cancer tissue using SDHA



Rabbit pAb at dilution 1/20

Western blot detection of SDHA in K562,C6,3T3 cell lysates using SDHA Rabbit pAb(1:1000 diluted).Predicted band size:73kDa.Observed band size:73kDa.



Immunocytochemistry of SDHA(green) in HeLa cells using SDHA Rabbit pAb at dilution 1/50, and DAPI(blue)