

# C20orf11 antibody



Catalog Number: 108691

## Product name

C20orf11 antibody

## Immunogen

[Human C20orf11 Recombinant protein \(His tag\)](#)

## Specificity

Human, Mouse, Monkey, Rat; other species not tested.

## Antibody description

C20orf11 Rabbit Polyclonal antibody. Positive IF detected in HEK-293 cells. Positive WB detected in HEK-293 cells, mouse brain tissue. Observed molecular weight by Western-blot: 30 kDa

## Preparation

This antibody was obtained by immunization of C20orf11 recombinant protein (Accession Number: NM\_017896). Purification method: Antigen affinity purified.

## Formulation

PBS with 0.1% sodium azide and 50% glycerol pH 7.3.

## Storage

Store at -20°C. DO NOT ALIQUOT

## Clonality

Polyclonal

## Ig Type

Rabbit IgG

## Applications

ELISA, WB, IF

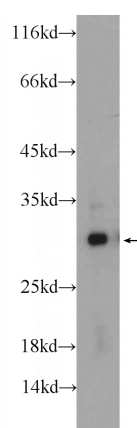
## Dilutions

Recommended Dilution:

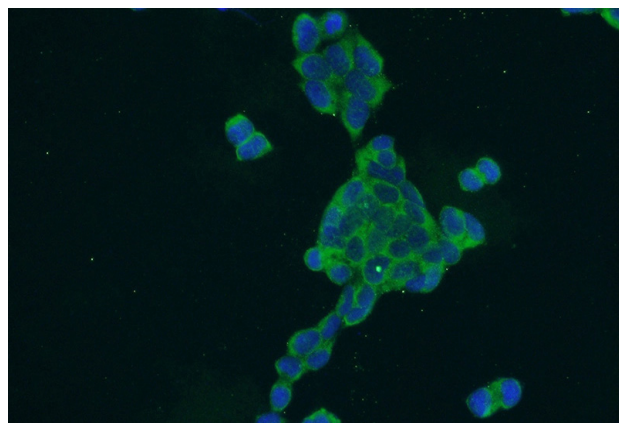
WB: 1:500-1:5000

IF: 1:20-1:200

## Validations



HEK-293 cells were subjected to SDS PAGE followed by western blot with Catalog No:108691(C20orf11 Antibody) at dilution of 1:1000



Immunofluorescent analysis of HEK-293 cells using Catalog No:108691(C20orf11 Antibody) at dilution of 1:50 and Alexa Fluor 488-conjugated AffiniPure Goat Anti-Rabbit IgG(H+L)