

Anti-Phospho-p38 (Thr180) Rabbit antibody



Catalog Number: 166691

Product name

Anti-Phospho-p38 (Thr180) Rabbit antibody

Specificity

Human, Mouse, Rat

Antibody description

Phospho-p38 (Thr180) Rabbit polyclonal antibody

Preparation

Antigen: Peptide sequence around phosphorylation site of threonine 180 (E-M-T(p)-G-Y) derived from Human P38MAPK.

Formulation

Supplied at 1.0mg/mL in phosphate buffered saline (without Mg²⁺ and Ca²⁺), pH 7.4, 150mM NaCl, 0.02% sodium azide and 50% glycerol.

Storage

Store at 4°C short term. Store at -20°C long term. Avoid freeze / thaw cycle.

Clonality

Polyclonal

Ig Type

Rabbit IgG

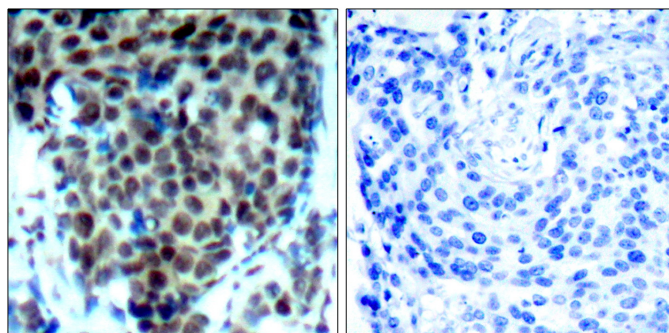
Applications

WB, IHC-P

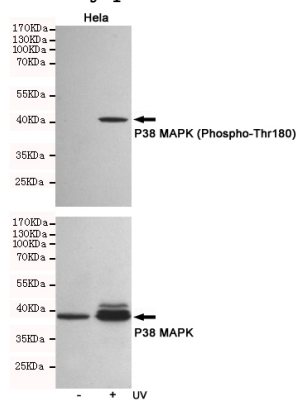
Dilutions

WB:1/500-1/1000 IHC:1/50-1/100

Validations

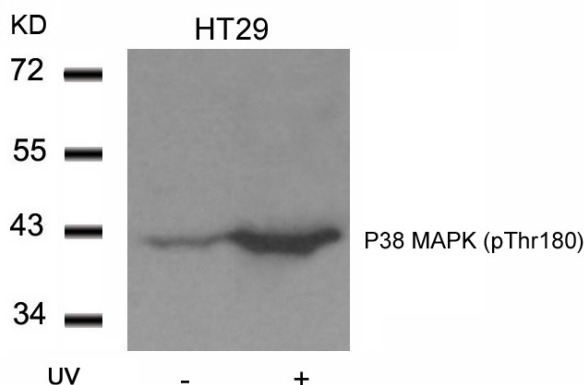


Immunohistochemical analysis of paraffin-embedded human breast carcinoma tissue using P38 MAPK (Phospho-Thr180) Antibody (left) or the same antibody preincubated with blocking peptide



(right).

Western blot analysis of extracts from HeLa cells, untreated or treated with UV, using P38 MAPK (Phospho-Thr180) Rabbit pAb (166691, 1:500 diluted, upper) or p38 MAPK Rabbit pAb (310008, 1:500 diluted, lower).



Western blot analysis of extracts from HT29 cells untreated or treated with UV using P38 MAPK (Phospho-Thr180) Antibody .