

RPL35 antibody



Catalog Number: 114891

Product name

RPL35 antibody

Immunogen

[Human RPL35 Recombinant protein \(GST tag & His tag\)](#)

Specificity

Human, Mouse, Rat; other species not tested.

Antibody description

RPL35 Rabbit Polyclonal antibody. Positive WB detected in mouse heart tissue, HeLa cells, mouse skeletal muscle tissue. Observed molecular weight by Western-blot: 15 kDa

Preparation

This antibody was obtained by immunization of RPL35 recombinant protein (Accession Number: NM_007209). Purification method: Antigen affinity purified.

Formulation

PBS with 0.1% sodium azide and 50% glycerol pH 7.3.

Storage

Store at -20°C. DO NOT ALIQUOT

Clonality

Polyclonal

Ig Type

Rabbit IgG

Applications

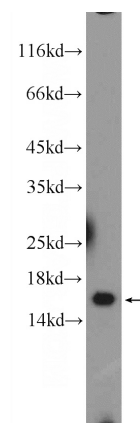
ELISA, WB

Dilutions

Recommended Dilution:

WB: 1:200-1:1000

Validations



mouse heart tissue were subjected to SDS PAGE followed by western blot with Catalog No:114891(RPL35 Antibody) at dilution of 1:300