

Anti-GPX5 antibody



Catalog Number: 176681

Product name

Anti-GPX5 antibody

Specificity

Human, Mouse

Antibody description

Mouse monoclonal antibody to GPX5

Preparation

This antigen of this antibody was peptide

Formulation

Liquid, 1*PBS (pH7.4), 0.2% BSA, 50% Glycerol.
Preservative: 0.05% Sodium Azide.

Storage

Store at +4°C after thawing. Aliquot store at -20°C or -80°C. Avoid repeated freeze / thaw cycles.

Clonality

Monoclonal

Ig Type

Mouse IgG1

Applications

WB, IHC-P, ICC

Dilutions

WB: 1:500-1:2,000

IHC-P: 1:50-1:200

ICC: 1:50-1:200

Validations

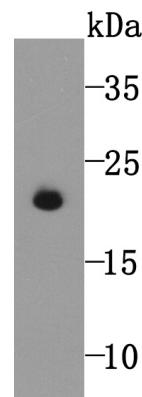


Fig1: Western blot analysis of GPX5 on human sperm tissue lysate using anti-GPX5 antibody at 1/5,000 dilution.

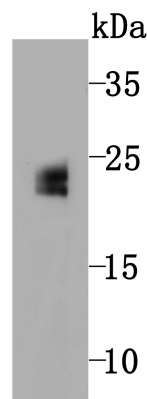


Fig2: Western blot analysis of GPX5 on mouse testis tissue lysate using anti-GPX5 antibody at 1/500 dilution.

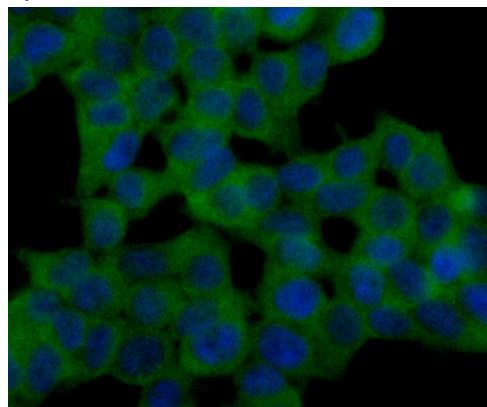


Fig3: ICC staining GPX5 (green) in 293T cells. The nuclear counter stain is DAPI (blue). Cells were fixed in paraformaldehyde, permeabilised with 0.25% Triton X100/PBS.

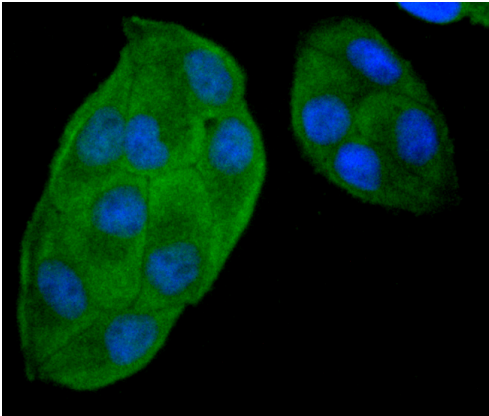


Fig4: ICC staining GPX5 (green) in HeLa cells. The nuclear counter stain is DAPI (blue). Cells were fixed in paraformaldehyde, permeabilised with 0.25% Triton X100/PBS.

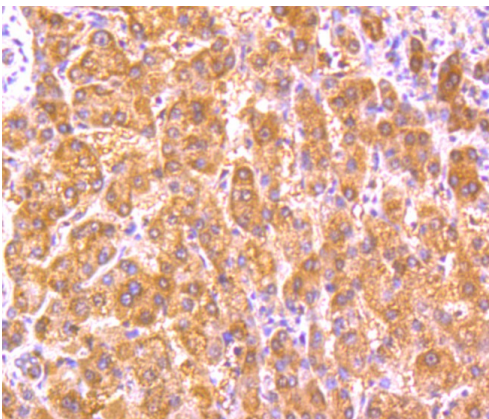


Fig5: Immunohistochemical analysis of paraffin-embedded human liver tissue using anti-GPX5

antibody. Counter stained with hematoxylin.

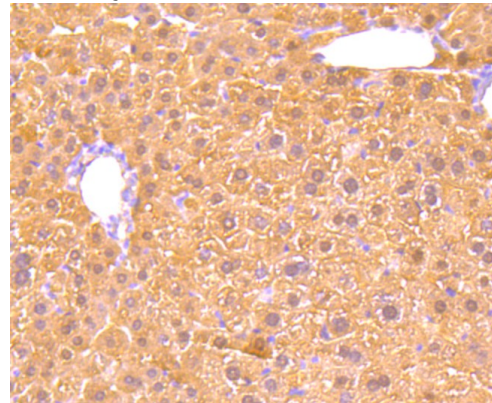


Fig6: Immunohistochemical analysis of paraffin-embedded mouse liver tissue using anti-GPX5 antibody. Counter stained with hematoxylin.

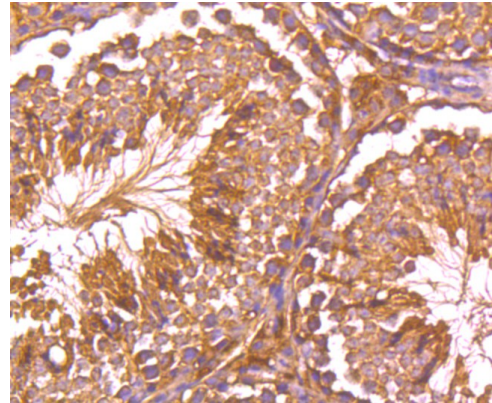


Fig7: Immunohistochemical analysis of paraffin-embedded mouse testis tissue using anti-GPX5 antibody. Counter stained with hematoxylin.