

# PPAR gamma antibody



Catalog Number: 114081

## Product name

PPAR gamma antibody

Recommended Dilution:

WB: 1:500-1:5000

## Specificity

Human, Mouse, Rat; other species not tested.

IP: 1:200-1:2000

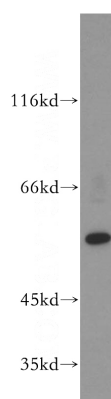
IHC: 1:20-1:200

## Antibody description

PPAR gamma Rabbit Polyclonal antibody. Positive IHC detected in human prostate cancer tissue, human heart tissue. Positive IF detected in HepG2 cells. Positive IP detected in HL-60 cells. Positive WB detected in U-937 cells, HL-60 cells, human heart tissue, K-562 cells, MCF7 cells, mouse heart tissue. Observed molecular weight by Western-blot: 50-60 kDa

IF: 1:10-1:100

## Validations



## Preparation

This antibody was obtained by immunization of PPAR gamma recombinant protein (Accession Number: XM\_011533841). Purification method: Antigen affinity purified.

U-937 cells were subjected to SDS PAGE followed by western blot with Catalog No:114081(PPARG antibody) at dilution of 1:800

## Formulation

PBS with 0.02% sodium azide and 50% glycerol pH 7.3.

## Storage

Store at -20°C. DO NOT ALIQUOT

## Clonality

Polyclonal

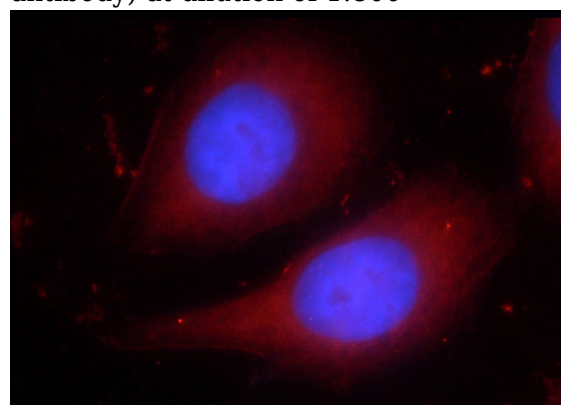
## Ig Type

Rabbit IgG

## Applications

ELISA, WB, IF, IHC, IP

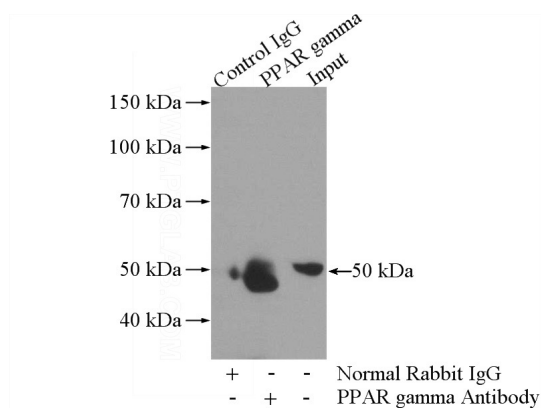
## Dilutions



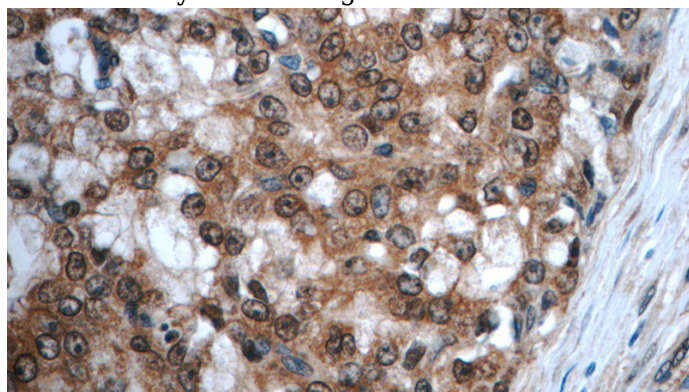
Immunofluorescent analysis of HepG2 cells using Catalog No:114081(PPARG Antibody) at dilution of 1:25 and Rhodamine-Goat anti-Rabbit IgG

# PPAR gamma antibody

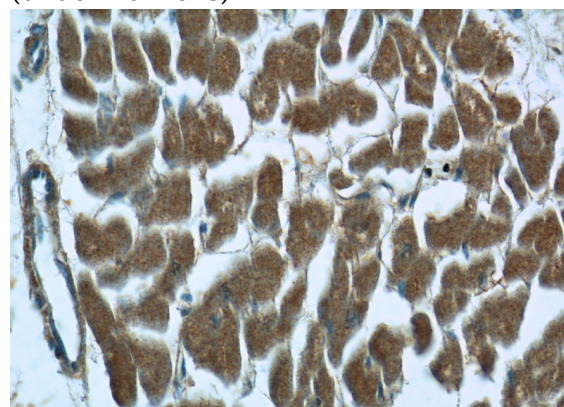
Catalog Number: 114081



IP Result of anti-PPARG (IP:Catalog No:114081, 3ug; Detection:Catalog No:114081 1:700) with HL-60 cells lysate 4000ug.



Immunohistochemistry of paraffin-embedded human prostate cancer tissue slide using Catalog No:114081(PPARG Antibody) at dilution of 1:50 (under 40x lens)



Immunohistochemistry of paraffin-embedded human heart tissue slide using Catalog No:114081(PPARG Antibody) at dilution of 1:50 (under 40x lens)