

GABARAPL1 antibody



Catalog Number: 110771

Product name

GABARAPL1 antibody

Specificity

Human, Mouse, Rat; other species not tested.

Antibody description

GABARAPL1 Rabbit Polyclonal antibody. Positive FC detected in HepG2 cells. Positive IHC detected in human kidney tissue. Positive WB detected in mouse kidney tissue, human heart tissue, human spleen tissue, mouse brain tissue, mouse liver tissue. Observed molecular weight by Western-blot: 17 kDa

Preparation

This antibody was obtained by immunization of Peptide (Accession Number: NM_031412). Purification method: Antigen affinity purified.

Formulation

PBS with 0.02% sodium azide and 50% glycerol pH 7.3.

Storage

Store at -20°C. DO NOT ALIQUOT

Clonality

Polyclonal

Ig Type

Rabbit IgG

Applications

ELISA, WB, IHC, FC

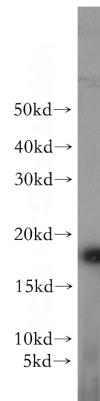
Dilutions

Recommended Dilution:

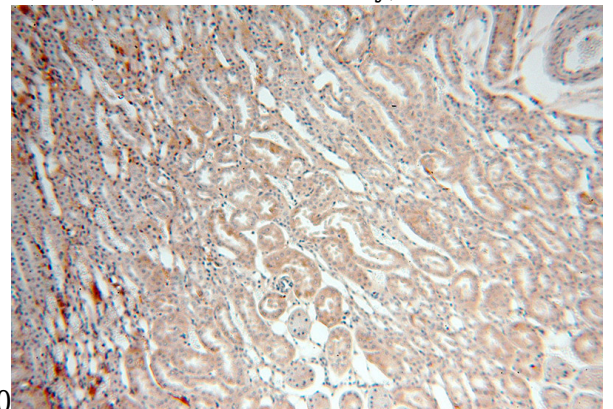
WB: 1:500-1:5000

IHC: 1:20-1:200

Validations

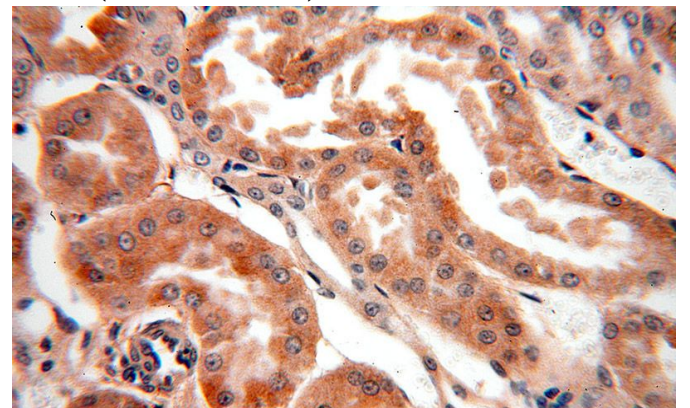


mouse kidney tissue were subjected to SDS PAGE followed by western blot with Catalog No:110771(GABARAPL1 antibody) at dilution of



1:500

Immunohistochemical of paraffin-embedded human kidney using Catalog No:110771(GABARAPL1 antibody) at dilution of 1:100 (under 10x lens)



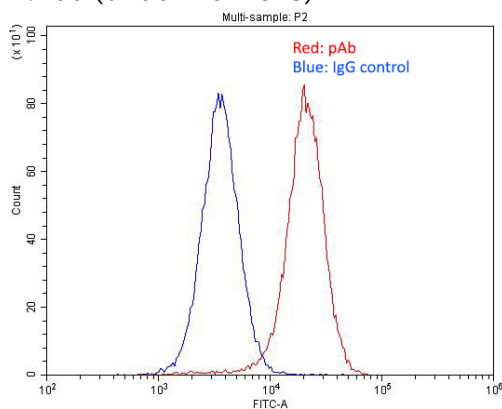
Immunohistochemical of paraffin-embedded human kidney using Catalog

GABARAPL1 antibody



Catalog Number: 110771

No:110771(GABARAPL1 antibody) at dilution of 1:100 (under 40x lens)



1X10⁶ HepG2 cells were stained with 0.2ug GABARAPL1 antibody (Catalog No:110771, red) and control antibody (blue). Fixed with 4% PFA blocked with 3% BSA (30 min). Alexa Fluor 488-conjugated AffiniPure Goat Anti-Rabbit IgG(H+L) with dilution 1:1500.