

# STAG2 antibody



Catalog Number: 115671

## Product name

STAG2 antibody

## Immunogen

[Human STAG2 Recombinant protein \(GST tag & His tag\)](#)

## Specificity

human, mouse, rat; other species not tested.

## Antibody description

STAG2 Rabbit Polyclonal antibody. Positive IF detected in 293. Positive IHC detected in human cervical cancer. Positive WB detected in Jurkat cells, HeLa cells, K-562 cells, MCF7 cells, NIH/3T3 cells. Observed molecular weight by Western-blot: 130-141kd

## Preparation

This antibody was obtained by immunization of STAG2 recombinant protein (Accession Number: XM\_017029234). Purification method: Antigen affinity purified.

## Formulation

PBS with 0.02% sodium azide and 50% glycerol pH 7.3.

## Storage

Store at -20°C. DO NOT ALIQUOT

## Clonality

Polyclonal

## Ig Type

Rabbit IgG

## Applications

ELISA, WB, IHC, IF

## Dilutions

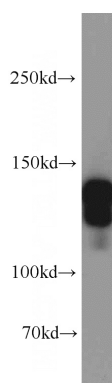
Recommended Dilution:

WB: 1:1000-1:10000

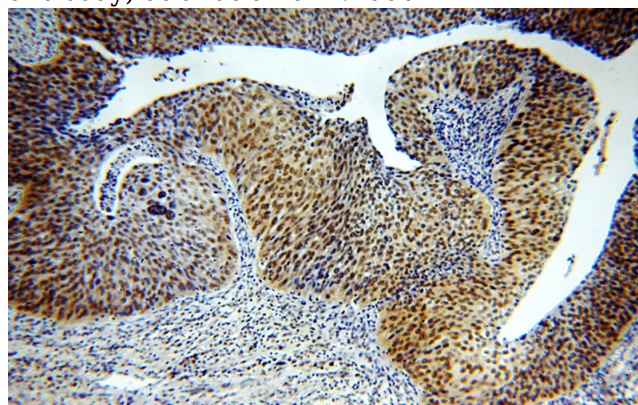
IHC: 1:20-1:200

IF: 1:10-1:100

## Validations



Jurkat cells were subjected to SDS PAGE followed by western blot with Catalog No:115671(STAG2 antibody) at dilution of 1:1000

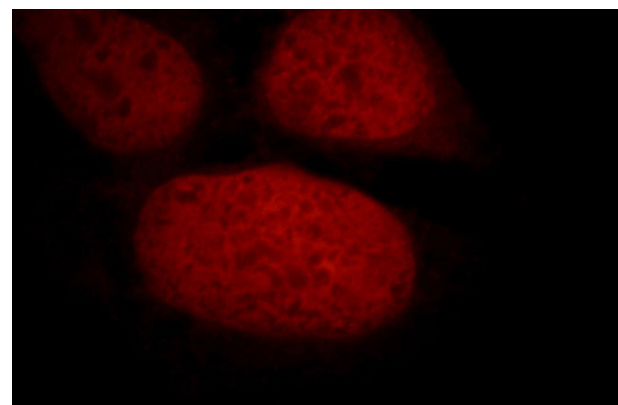
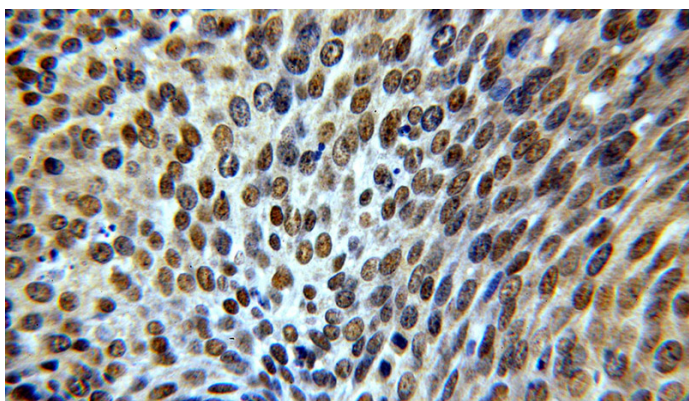


Immunohistochemical of paraffin-embedded human cervical cancer using Catalog No:115671(STAG2 antibody) at dilution of 1:100 (under 10x lens)

# STAG2 antibody

Catalog Number: 115671

---



Immunohistochemical of paraffin-embedded human cervical cancer using Catalog No:115671(STAG2 antibody) at dilution of 1:100 (under 40x lens)

Immunofluorescent analysis of 293 cells, using STAG2 antibody Catalog No:115671 at 1:25 dilution and Rhodamine-labeled goat anti-rabbit IgG (red).