

HSP90AB1 antibody



Catalog Number: 111571

Product name

HSP90AB1 antibody

WB: 1:500-1:5000

IP: 1:200-1:2000

Specificity

Human, Mouse, Rat; other species not tested.

IHC: 1:20-1:200

IF: 1:10-1:100

Antibody description

HSP90AB1 Rabbit Polyclonal antibody. Positive WB detected in HeLa cells, mouse thymus tissue, rat heart tissue. Positive IP detected in NIH/3T3 cells. Positive IF detected in HepG2 cells. Positive IHC detected in human pancreas cancer tissue. Positive FC detected in HeLa cells. Observed molecular weight by Western-blot: 83-90kd

Preparation

This antibody was obtained by immunization of HSP90AB1 recombinant protein (Accession Number: NM_007355). Purification method: Antigen affinity purified.

Formulation

PBS with 0.1% sodium azide and 50% glycerol pH 7.3.

Storage

Store at -20°C. DO NOT ALIQUOT

Clonality

Polyclonal

Ig Type

Rabbit IgG

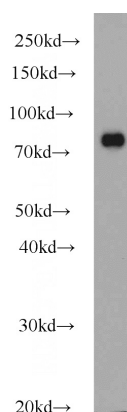
Applications

ELISA, WB, IHC, IF, FC, IP

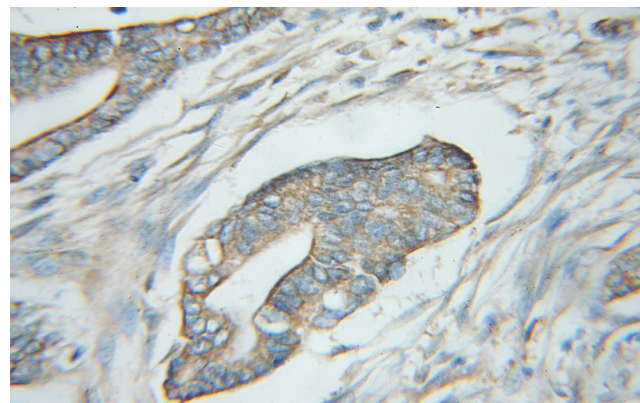
Dilutions

Recommended Dilution:

Validations



HeLa cells were subjected to SDS PAGE followed by western blot with Catalog No:111571(HSP90AB1 antibody) at dilution of 1:1000

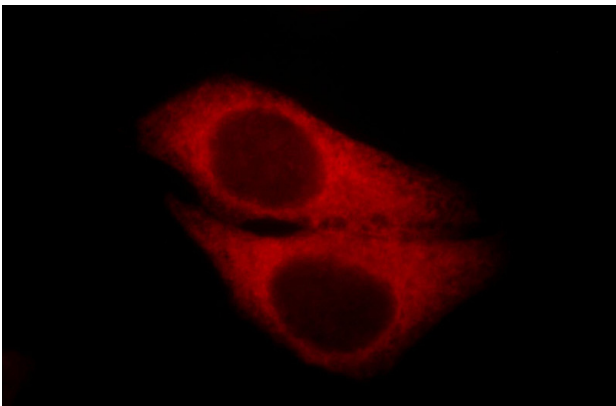


Immunohistochemical of paraffin-embedded human pancreas cancer using Catalog No:111571(HSP90AB1 antibody) at dilution of 1:50 (under 10x lens)

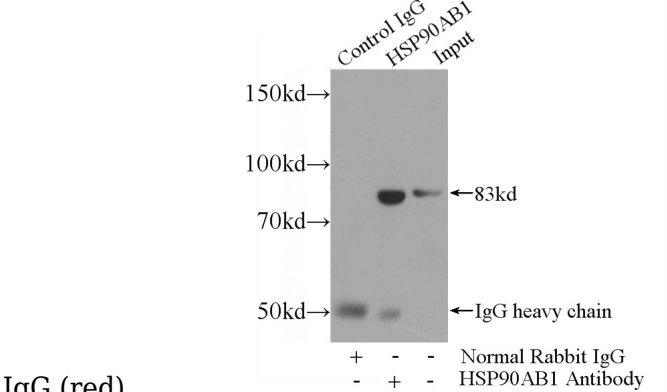
HSP90AB1 antibody



Catalog Number: 111571

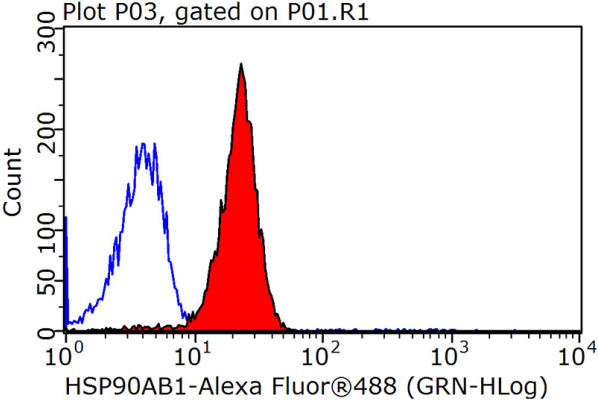


Immunofluorescent analysis of HepG2 cells, using HSP90AB1 antibody Catalog No:111571 at 1:25 dilution and Rhodamine-labeled goat anti-rabbit



IgG (red).

IP Result of anti-HSP90AB1 (IP:Catalog No:111571, 4ug; Detection:Catalog No:111571 1:700) with NIH/3T3 cells lysate 1200ug.



1X10⁶ HeLa cells were stained with 0.2ug HSP90AB1 antibody (Catalog No:111571, red) and control antibody (blue). Fixed with 90% MeOH blocked with 3% BSA (30 min). Alexa Fluor 488-conjugated AffiniPure Goat Anti-Rabbit IgG(H+L) with dilution 1:1500.