

TOM20 antibody



Catalog Number: 116171

Product name

TOM20 antibody

Immunogen

[Human TOM20 Recombinant protein \(GST tag & His tag\)](#)

Specificity

Human, Mouse; other species not tested.

Antibody description

TOM20 Rabbit Polyclonal antibody. Positive FC detected in HeLa cells. Positive IHC detected in human gliomas tissue. Positive IP detected in HEK-293 cells. Positive WB detected in mouse brain tissue, HEK-293 cells, HeLa cells, mouse liver tissue. Observed molecular weight by Western-blot: 16kd

Preparation

This antibody was obtained by immunization of TOM20 recombinant protein (Accession Number: NM_014765). Purification method: Antigen affinity purified.

Formulation

PBS with 0.1% sodium azide and 50% glycerol pH 7.3.

Storage

Store at -20°C. DO NOT ALIQUOT

Clonality

Polyclonal

Ig Type

Rabbit IgG

Applications

ELISA, IHC, WB, IP, FC

Dilutions

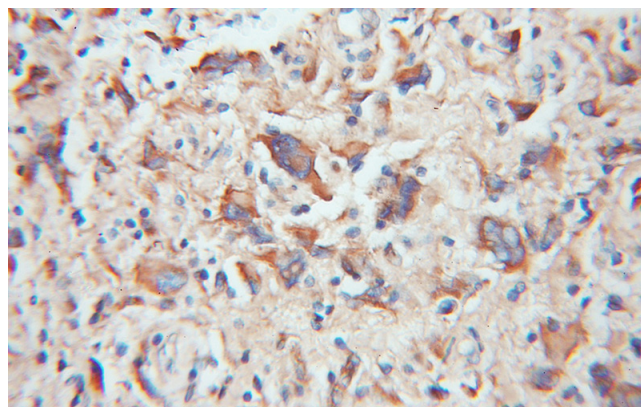
Recommended Dilution:

WB: 1:1000-1:10000

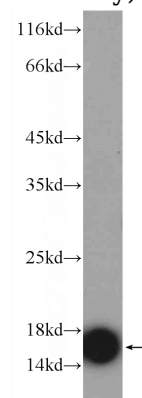
IP: 1:1000-1:10000

IHC: 1:20-1:200

Validations



Immunohistochemical of paraffin-embedded human gliomas using Catalog No:116171(TOM20 antibody) at dilution of 1:100 (under 10x lens)

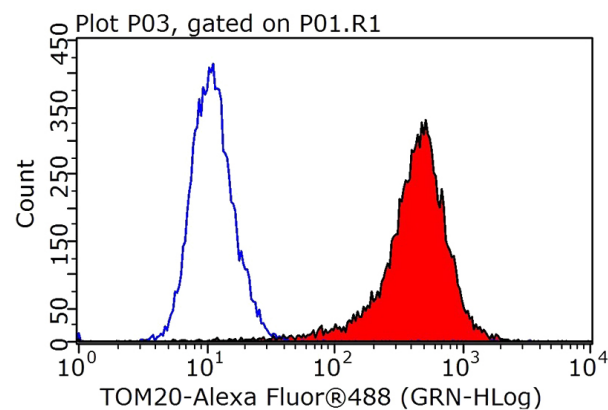
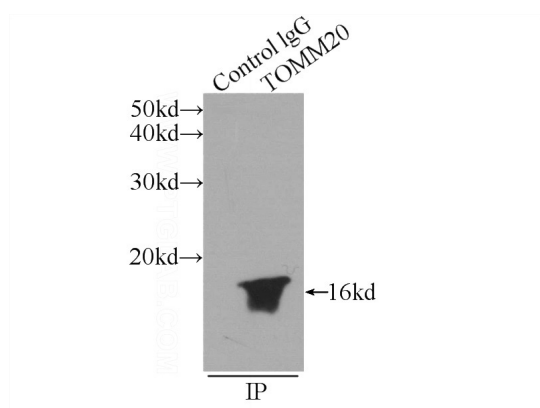


mouse brain tissue were subjected to SDS PAGE followed by western blot with Catalog No:116171(TOM20 Antibody) at dilution of 1:2000

TOM20 antibody



Catalog Number: 116171



IP Result of anti-TOM20 (IP:Catalog No:116171, 3ug; Detection:Catalog No:116171 1:2000) with HEK-293 cells lysate 2400ug.

1×10^6 HeLa cells were stained with 0.2ug TOM20 antibody (Catalog No:116171, red) and control antibody (blue). Fixed with 4% PFA blocked with 3% BSA (30 min). Alexa Fluor 488-conjugated AffiniPure Goat Anti-Rabbit IgG(H+L) with dilution 1:1000.