

PYGM-Specific antibody



Catalog Number: 114361

Product name

PYGM-Specific antibody

IHC: 1:20-1:200

IF: 1:20-1:200

Specificity

Human, Mouse, Rat; other species not tested.

Antibody description

PYGM-Specific Rabbit Polyclonal antibody. Positive IHC detected in human skeletal muscle tissue, human liver tissue. Positive IF detected in HepG2 cells. Positive WB detected in mouse skeletal muscle tissue, HepG2 cells. Observed molecular weight by Western-blot: 97 kDa

Preparation

This antibody was obtained by immunization of Peptide (Accession Number: NM_005609). Purification method: Antigen affinity purified.

Formulation

PBS with 0.02% sodium azide and 50% glycerol pH 7.3.

Storage

Store at -20°C. DO NOT ALIQUOT

Clonality

Polyclonal

Ig Type

Rabbit IgG

Applications

ELISA, IHC, IF, WB

Dilutions

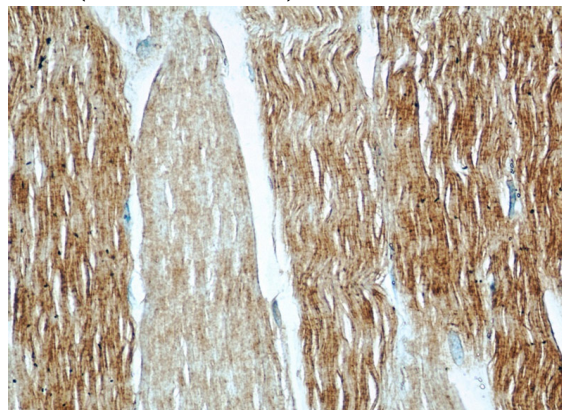
Recommended Dilution:

WB: 1:500-1:5000

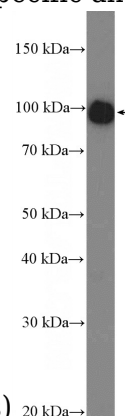
Validations



Immunohistochemical of paraffin-embedded human skeletal muscle using Catalog No: 114361 (PYGM-Specific antibody) at dilution of 1:50 (under 10x lens)



Immunohistochemical of paraffin-embedded human skeletal muscle using Catalog No: 114361 (PYGM-Specific antibody) at dilution of 1:50 (under 40x lens)

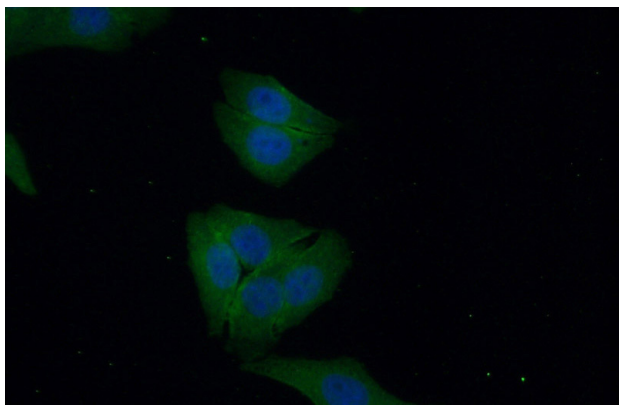


PYGM-Specific antibody



Catalog Number: 114361

mouse skeletal muscle tissue were subjected to SDS PAGE followed by western blot with Catalog No:114361(PYGM-Specific Antibody) at dilution of 1:1000



Immunofluorescent analysis of (10% Formaldehyde) fixed HepG2 cells using Catalog No:114361(PYGM-Specific Antibody) at dilution of 1:50 and Alexa Fluor 488-conjugated AffiniPure Goat Anti-Rabbit IgG(H+L)