

LTBR antibody



Catalog Number: 112361

Product name

LTBR antibody

Specificity

Human, Mouse; other species not tested.

Antibody description

LTBR Rabbit Polyclonal antibody. Positive FC detected in HEK-293 cells. Positive IHC detected in human hepat°Cirrhosis tissue. Positive WB detected in mouse brain tissue. Observed molecular weight by Western-blot: 47kd

Preparation

This antibody was obtained by immunization of LTBR recombinant protein (Accession Number: NM_002342). Purification method: Antigen affinity purified.

Formulation

PBS with 0.02% sodium azide and 50% glycerol pH 7.3.

Storage

Store at -20°C. DO NOT ALIQUOT

Clonality

Polyclonal

Ig Type

Rabbit IgG

Applications

ELISA, WB, IHC, FC

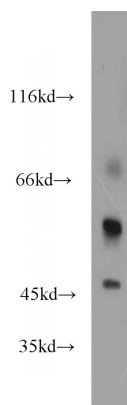
Dilutions

Recommended Dilution:

WB: 1:200-1:2000

IHC: 1:20-1:200

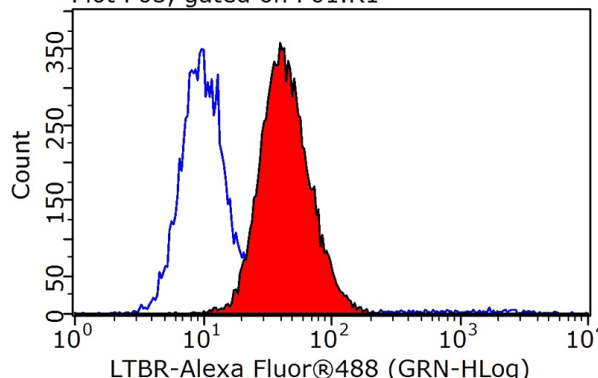
Validations



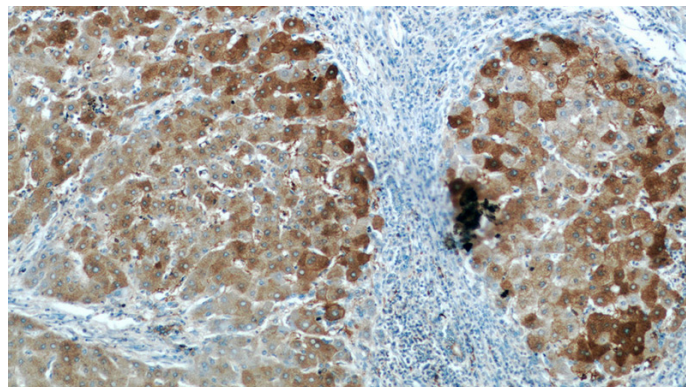
mouse brain tissue were subjected to SDS PAGE followed by western blot with Catalog

No:112361(LTBR antibody) at dilution of 1:1000

Plot P03, gated on P01.R1



1X10⁶ HEK-293 cells were stained with 0.2ug LTBR antibody (Catalog No:112361, red) and control antibody (blue). Fixed with 90% MeOH blocked with 3% BSA (30 min). Alexa Fluor 488-conjugated AffiniPure Goat Anti-Rabbit IgG(H+L) with dilution 1:1000.

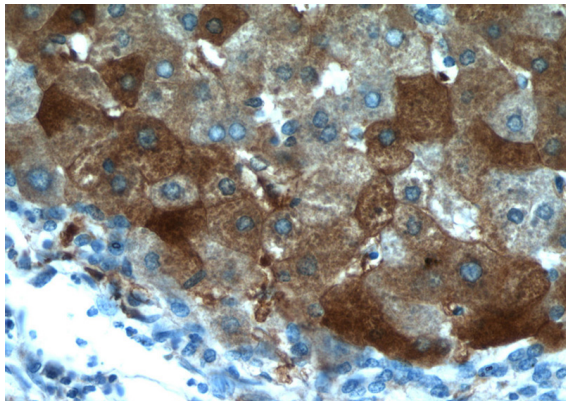


Immunohistochemical of paraffin-embedded

LTBR antibody

Catalog Number: 112361

human hepatocirrhosis using Catalog
No:112361(LTBR antibody) at dilution of 1:50
(under 10x lens)



Immunohistochemical of paraffin-embedded
human hepatocirrhosis using Catalog
No:112361(LTBR antibody) at dilution of 1:50
(under 40x lens)