

# Mouse EGFR/HER1/ErbB1 (Fc Tag) recombinant protein



Catalog Number: 503261

## General Information

### Protein Construction

A DNA sequence encoding the extracellular domain of mouse EGFR (Q01279) (Met 1-Ser 647) was fused with the Fc region of human IgG1 at the C-terminus.

### Organism

Mouse

### Expression Host

Human Cells

## QC Testing

### Activity

Measured by its ability to bind human EGF (Cat:501239) in a functional ELISA.

### Purity

> 90 % as determined by SDS-PAGE

### Endotoxin

< 1.0 EU per  $\mu\text{g}$  of the protein as determined by the LAL method

### Stability

Samples are stable for up to twelve months from date of receipt at  $-70^{\circ}\text{C}$

### Predicted N terminal

Leu 25

### Molecular Mass

The secreted recombinant mouse EGFR/Fc is a

disulfide-linked homodimer. The reduced monomer comprises 864 amino acids and has a calculated molecular mass of 96 kDa. As a result of glycosylation, the apparent molecular mass of rmEGFR/Fc monomer is approximately 130 kDa in SDS-PAGE under reducing conditions.

### Formulation

Lyophilized from sterile PBS, pH 7.4

1. 5 % trehalose and mannitol are added as protectants before lyophilization.

2. Please contact us for any concerns or special requirements.

## Usage Guide

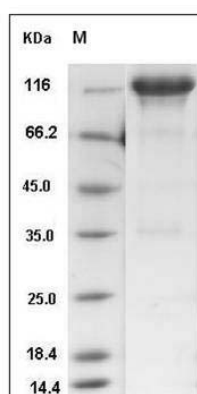
### Storage

Store it under sterile conditions at  $-20^{\circ}\text{C}$  to  $-80^{\circ}\text{C}$ . It is recommended that the protein be aliquoted for optimal storage. Avoid repeated freeze-thaw cycles.

### Reconstitution

Adding sterile water, prepare a stock solution of 0.25 mg/ml. Concentration is measured by UV-Vis.

### SDS-PAGE



Mouse EGFR / HER1 / ErbB1 Protein (Fc Tag)  
SDS-PAGE