

# Kynurenine 3 monooxygenase antibody



Catalog Number: 112261

## Product name

ELISA, WB, IHC, IF

Kynurenine 3 monooxygenase antibody

## Dilutions

## Immunogen

Recommended Dilution:

[Human KMO Recombinant protein \(GST tag & His tag\)](#)

WB: 1:500-1:5000

IHC: 1:20-1:200

## Specificity

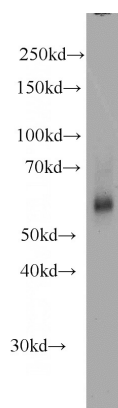
IF: 1:10-1:100

Human, Mouse, Rat; other species not tested.

## Antibody description

Kynurenine 3 monooxygenase Rabbit Polyclonal antibody. Positive WB detected in mouse heart tissue, HeLa cells, mouse spleen tissue, rat spleen tissue. Positive IF detected in HepG2 cells. Positive IHC detected in human breast cancer tissue, human prostate cancer tissue, mouse heart tissue. Observed molecular weight by Western-blot: 55.8 kDa

## Validations



## Preparation

This antibody was obtained by immunization of Kynurenine 3 monooxygenase recombinant protein (Accession Number: BC005297). Purification method: Antigen affinity purified.

mouse heart tissue were subjected to SDS PAGE followed by western blot with Catalog No:112261(KMO antibody) at dilution of 1:1000

## Formulation

PBS with 0.1% sodium azide and 50% glycerol pH 7.3.

## Storage

Store at -20°C. DO NOT ALIQUOT

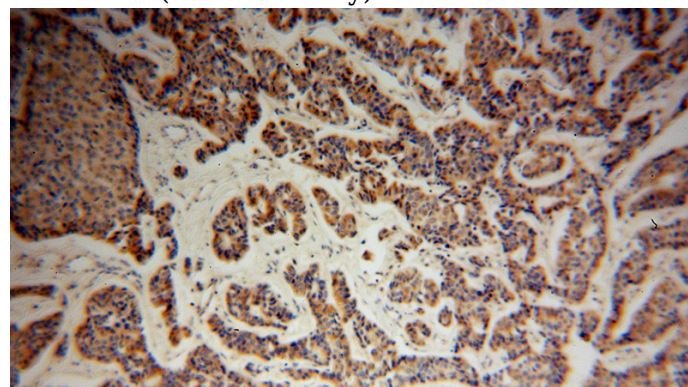
## Clonality

Polyclonal

## Ig Type

Rabbit IgG

## Applications



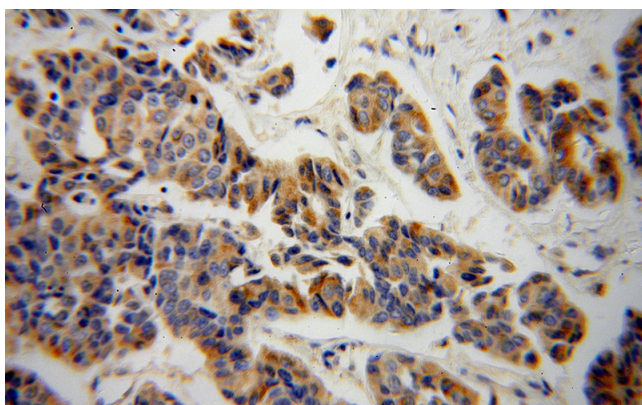
Immunohistochemical of paraffin-embedded human breast cancer using Catalog No:112261(KMO antibody) at dilution of 1:100 (under 10x lens)

# Kynurenine 3 monooxygenase antibody

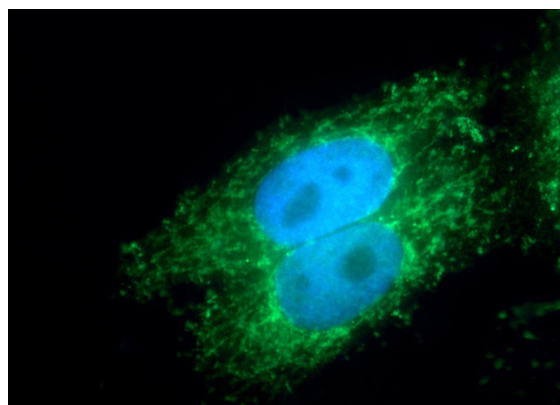


Catalog Number: 112261

---



Immunohistochemical of paraffin-embedded human breast cancer using Catalog No:112261(KMO antibody) at dilution of 1:100 (under 40x lens)



Immunofluorescent analysis of HepG2 cells using Catalog No:112261(KMO Antibody) at dilution of 1:25 and Alexa Fluor 488-conjugated AffiniPure Goat Anti-Rabbit IgG(H+L)