

CCDC109A antibody



Catalog Number: 108961

Product name

CCDC109A antibody

Clonality

Polyclonal

Immunogen

[Human CCDC109A Recombinant protein \(GST tag & His tag\)](#)

Ig Type

Rabbit IgG

Specificity

Human; other species not tested.

Applications

ELISA, WB, IF

Antibody description

CCDC109A Rabbit Polyclonal antibody. Positive IF detected in HepG2 cells. Positive WB detected in HepG2 cells, HeLa cells, HL-60 cells. Observed molecular weight by Western-blot: 35 kDa

Dilutions

Recommended Dilution:

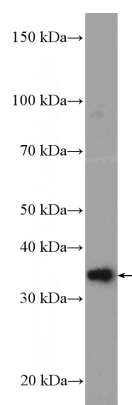
WB: 1:200-1:2000

IF: 1:50-1:500

Preparation

This antibody was obtained by immunization of CCDC109A recombinant protein (Accession Number: NM_138357). Purification method: Antigen affinity purified.

Validations



Formulation

PBS with 0.1% sodium azide and 50% glycerol pH 7.3.

Storage

Store at -20°C. DO NOT ALIQUOT

HepG2 cells were subjected to SDS PAGE followed by western blot with Catalog No:108961(CCDC109A Antibody) at dilution of 1:600