

# Relatlimab reference antibody



Catalog Number: 176861

## Product name

Relatlimab reference antibody

## Specificity

Human LAG3 / CD223

## Antibody description

Anti-LAG3 / CD223 Antibody (Relatlimab)

## Preparation

Recombinant expression and purified from CHO cells.

## Formulation

0.1 M Pro-Ac, 20 mM Arg, pH 5.0

## Storage

-80°C for 2 years under sterile conditions; -20°C for 1 year under sterile conditions; Avoid repeated freeze-thaw cycles.

## Clonality

Monoclonal

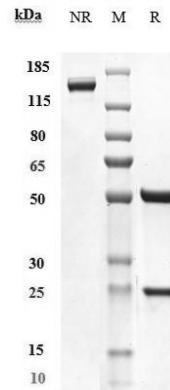
## Ig Type

IgG4SP

## Applications

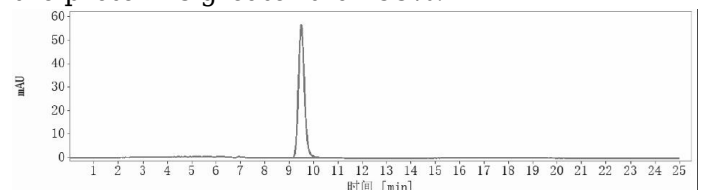
ELISA

## Validations



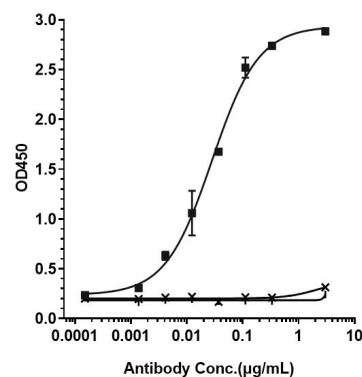
## SDS-PAGE

Anti-LAG3 / CD223 Antibody (relatlimab) on SDS-PAGE under reducing (R) condition. The purity of the protein is greater than 95%.



## SEC-HPLC

The purity of Anti-LAG3 / CD223 Antibody (relatlimab) is 100%, determined by SEC-HPLC.



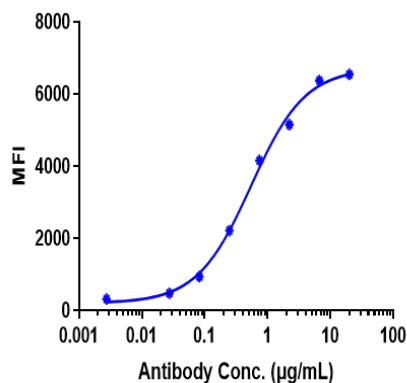
## Bioactivity: ELISA

Immobilized human LAG3 His at 2 µg/mL can bind Anti-LAG3 / CD223 Antibody (relatlimab), EC50=0.02812 µg/mL.

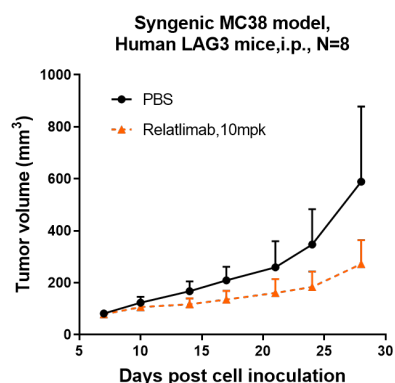
# Relatlimab reference antibody



Catalog Number: 176861



EC50=0.5464 ug/mL.



## Bioactivity: FACS

Human LAG3 CHO cells were stained with Anti-LAG3 / CD223 Antibody (relatlimab) and negative control protein respectively, washed and then followed by PE and analyzed with FACS,

## Research in vivo

Relatlimab inhibited the tumor growth of MC38 on Human LAG3 mice. The result showed significant anti-tumor effects, with an tumor inhibition rate (TGI) of 53.8% at 10 mpk at D28.