

TYW1B antibody



Catalog Number: 116461

Product name

TYW1B antibody

Recommended Dilution:

WB: 1:200-1:2000

Immunogen

[Human TYW1B Recombinant protein \(GST tag & His tag\)](#)

IHC: 1:20-1:200

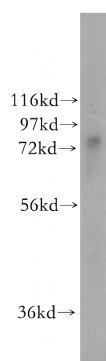
Validations

Specificity

human, mouse, rat; other species not tested.

Antibody description

TYW1B Rabbit Polyclonal antibody. Positive WB detected in mouse liver tissue, MCF7 cells. Positive IHC detected in human ovary. Observed molecular weight by Western-blot: 77kd



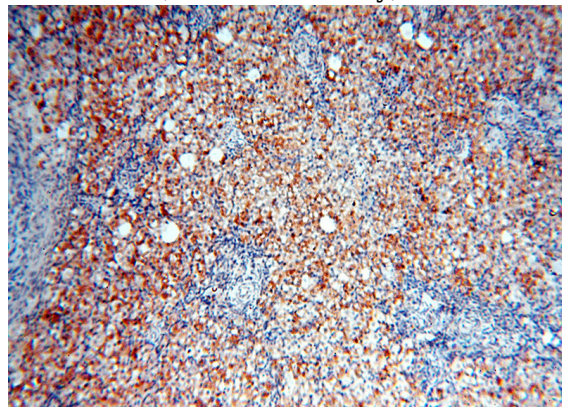
Preparation

This antibody was obtained by immunization of TYW1B recombinant protein (Accession Number: NM_001145440). Purification method: Antigen affinity purified.

mouse liver tissue were subjected to SDS PAGE followed by western blot with Catalog No:116461(TYW1B antibody) at dilution of 1:500

Formulation

PBS with 0.02% sodium azide and 50% glycerol pH 7.3.



Storage

Store at -20°C. DO NOT ALIQUOT

Clonality

Polyclonal

Ig Type

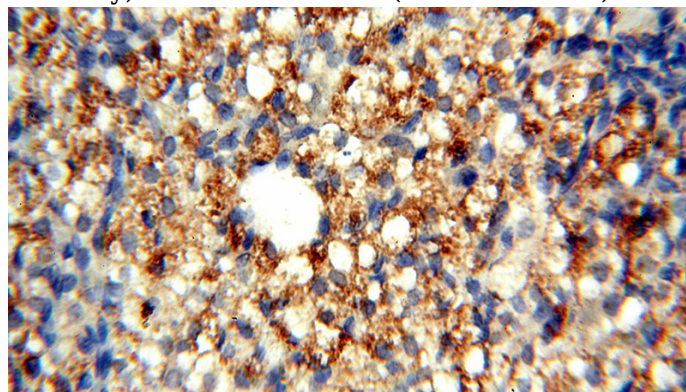
Rabbit IgG

Applications

ELISA, WB, IHC

Dilutions

Immunohistochemical of paraffin-embedded human ovary using Catalog No:116461(TYW1B antibody) at dilution of 1:50 (under 10x lens)



TYW1B antibody



Catalog Number: 116461

Immunohistochemical of paraffin-embedded

human ovary using Catalog No:116461(TYW1B antibody) at dilution of 1:50 (under 40x lens)