

# POP4 antibody



Catalog Number: 114061

## Product name

POP4 antibody

## Specificity

Human; other species not tested.

## Antibody description

POP4 Rabbit Polyclonal antibody. Positive WB detected in HepG2 cells, HeLa cells. Positive IF detected in HepG2 cells. Observed molecular weight by Western-blot: 29 kDa

## Preparation

This antibody was obtained by immunization of POP4 recombinant protein (Accession Number: NM\_006627). Purification method: Antigen affinity purified.

## Formulation

PBS with 0.02% sodium azide and 50% glycerol pH 7.3.

## Storage

Store at -20°C. DO NOT ALIQUOT

## Clonality

Polyclonal

## Ig Type

Rabbit IgG

## Applications

ELISA, WB, IF

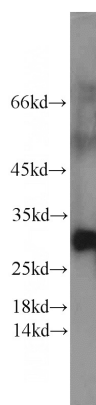
## Dilutions

Recommended Dilution:

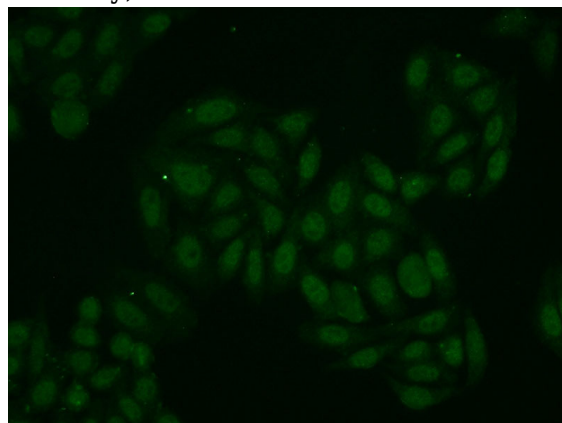
WB: 1:200-1:2000

IF: 1:20-1:200

## Validations



HepG2 cells were subjected to SDS PAGE followed by western blot with Catalog No:114061(POP4 antibody) at dilution of 1:500



Immunofluorescent analysis of HepG2 cells using Catalog No:114061(POP4 Antibody) at dilution of 1:50 and Alexa Fluor 488-conjugated AffiniPure Goat Anti-Rabbit IgG(H+L)