

HINT1 antibody



Catalog Number: 111351

Product name

HINT1 antibody

Immunogen

[Human HINT1 Recombinant protein \(GST tag & His tag\)](#)

Specificity

Human, Mouse, Rat; other species not tested.

Antibody description

HINT1 Rabbit Polyclonal antibody. Positive IHC detected in human colon cancer tissue. Positive WB detected in HEK-293 cells, K-562 cells, Raji cells, rat brain tissue, rat thymus tissue. Positive IP detected in mouse brain tissue. Observed molecular weight by Western-blot: 14 kDa

Preparation

This antibody was obtained by immunization of HINT1 recombinant protein (Accession Number: NM_005340). Purification method: Antigen affinity purified.

Formulation

PBS with 0.1% sodium azide and 50% glycerol pH 7.3.

Storage

Store at -20°C. DO NOT ALIQUOT

Clonality

Polyclonal

Ig Type

Rabbit IgG

Applications

ELISA, WB, IHC, IP

Dilutions

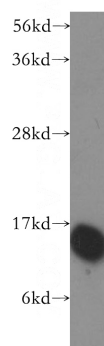
Recommended Dilution:

WB: 1:500-1:5000

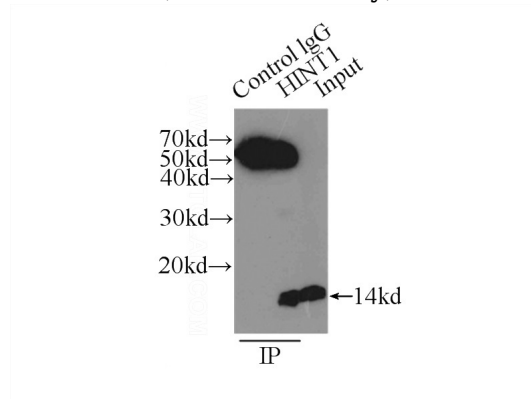
IP: 1:200-1:2000

IHC: 1:20-1:200

Validations



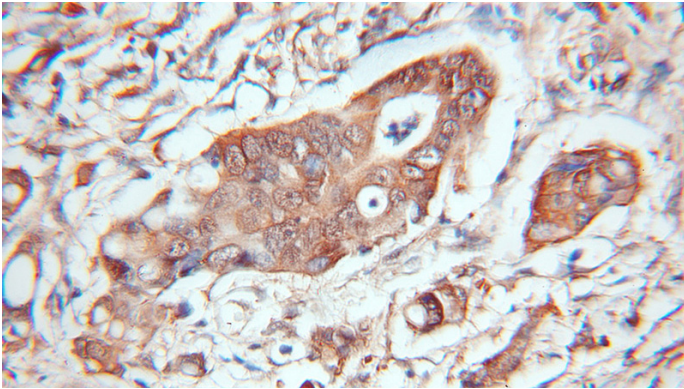
HEK-293 cells were subjected to SDS PAGE followed by western blot with Catalog No:111351(HINT1 antibody) at dilution of 1:400



IP Result of anti-HINT1 (IP:Catalog No:111351, 3ug; Detection:Catalog No:111351 1:500) with mouse brain tissue lysate 7500ug.

HINT1 antibody

Catalog Number: 111351



Immunohistochemical of paraffin-embedded human colon cancer using Catalog No:111351(HINT1 antibody) at dilution of 1:100 (under 10x lens)