

CC2D1A antibody



Catalog Number: 108951

Product name

CC2D1A antibody

Recommended Dilution:

WB: 1:500-1:5000

Specificity

Human, Mouse, Rat; other species not tested.

IP: 1:1000-1:10000

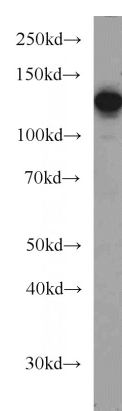
IHC: 1:20-1:200

Antibody description

CC2D1A Rabbit Polyclonal antibody. Positive IF detected in HepG2 cells. Positive IHC detected in human testis tissue, human brain tissue, human liver tissue, human skin tissue. Positive IP detected in mouse liver tissue. Positive WB detected in HEK-293 cells, HeLa cells, Jurkat cells, mouse liver tissue. Observed molecular weight by Western-blot: 130 kDa, 104 kDa

IF: 1:20-1:200

Validations



HEK-293 cells were subjected to SDS PAGE followed by western blot with Catalog No:108951(CC2D1A antibody) at dilution of 1:1000

Preparation

This antibody was obtained by immunization of CC2D1A recombinant protein (Accession Number: NM_017721). Purification method: Antigen affinity purified.

Formulation

PBS with 0.02% sodium azide and 50% glycerol pH 7.3.

Storage

Store at -20°C. DO NOT ALIQUOT

Clonality

Polyclonal

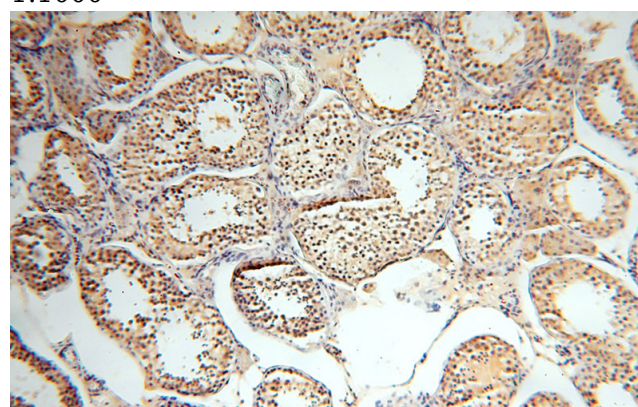
Ig Type

Rabbit IgG

Applications

ELISA, WB, IHC, IF, IP

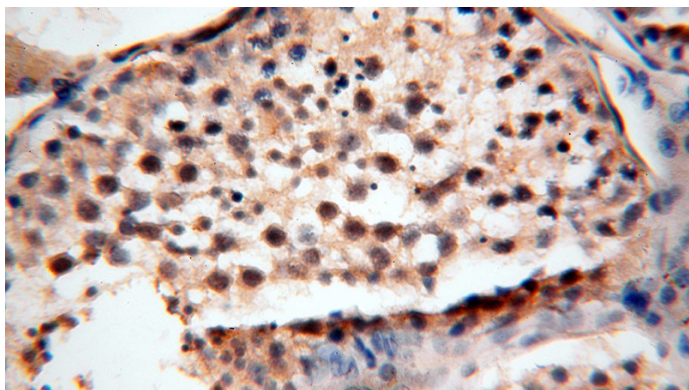
Dilutions



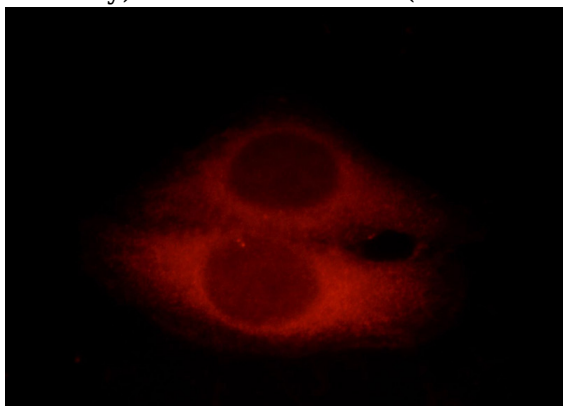
Immunohistochemical of paraffin-embedded human testis using Catalog No:108951(CC2D1A antibody) at dilution of 1:100 (under 10x lens)

CC2D1A antibody

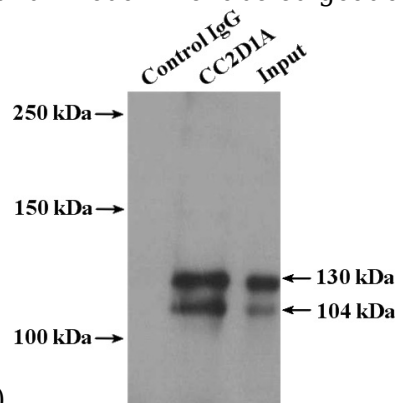
Catalog Number: 108951



Immunohistochemical of paraffin-embedded human testis using Catalog No:108951(CC2D1A antibody) at dilution of 1:100 (under 40x lens)



Immunofluorescent analysis of HepG2 cells, using CC2D1A antibody Catalog No:108951 at 1:50 dilution and Rhodamine-labeled goat anti-rabbit



IgG (red).

IP Result of anti-CC2D1A (IP:Catalog No:108951, 4ug; Detection:Catalog No:108951 1:2000) with mouse liver tissue lysate 4000ug.