

# TXNDC4 antibody



Catalog Number: 116451

## Product name

TXNDC4 antibody

IP: 1:200-1:2000

IHC: 1:20-1:200

## Specificity

Human; other species not tested.

IF: 1:10-1:100

## Antibody description

TXNDC4 Rabbit Polyclonal antibody. Positive WB detected in K-562 cells, HeLa cells, HepG2 cells, MCF7 cells. Positive IP detected in K-562 cells. Positive IF detected in Hela cells. Positive IHC detected in human breast cancer tissue. Observed molecular weight by Western-blot: 44-47 kDa

## Preparation

This antibody was obtained by immunization of TXNDC4 recombinant protein (Accession Number: NM\_015051). Purification method: Antigen affinity purified.

## Formulation

PBS with 0.02% sodium azide and 50% glycerol pH 7.3.

## Storage

Store at -20°C. DO NOT ALIQUOT

## Clonality

Polyclonal

## Ig Type

Rabbit IgG

## Applications

ELISA, WB, IHC, IF, IP

## Dilutions

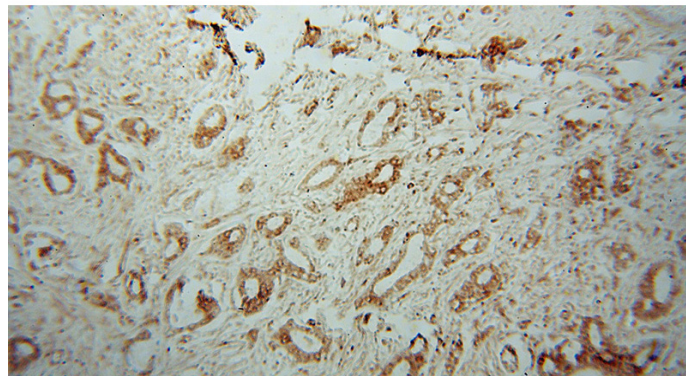
Recommended Dilution:

WB: 1:500-1:5000

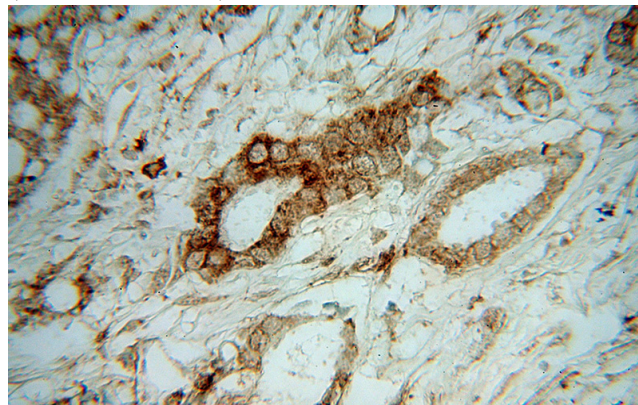
## Validations



K-562 cells were subjected to SDS PAGE followed by western blot with Catalog No:116451(ERP44 antibody) at dilution of 1:1500



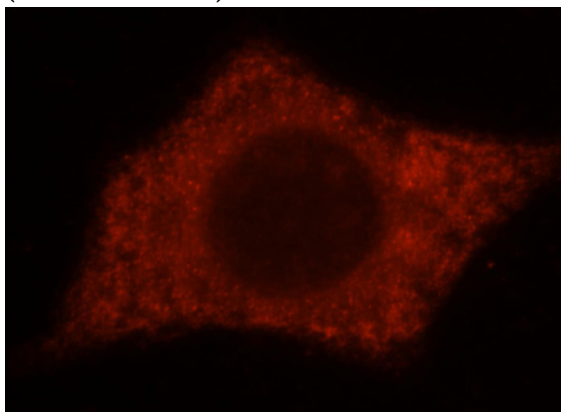
Immunohistochemical of paraffin-embedded human breast cancer using Catalog No:116451(ERP44 antibody) at dilution of 1:100 (under 10x lens)



# TXNDC4 antibody

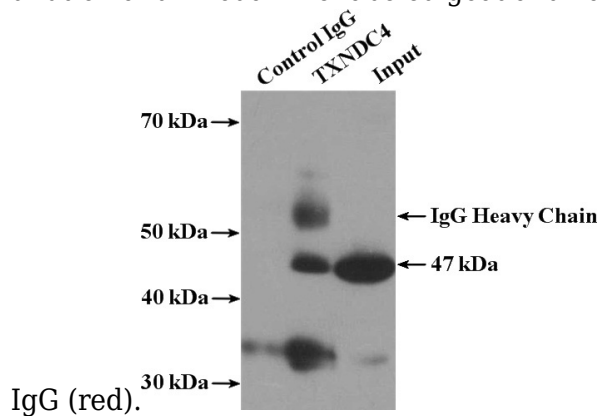
Catalog Number: 116451

Immunohistochemical of paraffin-embedded human breast cancer using Catalog No:116451(ERP44 antibody) at dilution of 1:100 (under 40x lens)



Immunofluorescent analysis of Hela cells, using

ERP44 antibody Catalog No:116451 at 1:25 dilution and Rhodamine-labeled goat anti-rabbit



IP Result of anti-ERP44 (IP:Catalog No:116451, 4ug; Detection:Catalog No:116451 1:500) with K-562 cells lysate 4000ug.