

# PCM1 antibody



Catalog Number: 113741

## Product name

PCM1 antibody

## Immunogen

[Human PCM1 Recombinant protein \(GST tag & His tag\)](#)

## Specificity

Human, Mouse; other species not tested.

## Antibody description

PCM1 Rabbit Polyclonal antibody. Positive WB detected in HeLa cells, HT-1080 cells, NIH/3T3 cells. Positive IP detected in HeLa cells. Positive IHC detected in human tonsillitis tissue. Observed molecular weight by Western-blot: 260-270 kDa

## Preparation

This antibody was obtained by immunization of PCM1 recombinant protein (Accession Number: NM\_001352660). Purification method: Antigen affinity purified.

## Formulation

PBS with 0.1% sodium azide and 50% glycerol pH 7.3.

## Storage

Store at -20°C. DO NOT ALIQUOT

## Clonality

Polyclonal

## Ig Type

Rabbit IgG

## Applications

ELISA, WB, IP, IHC

## Dilutions

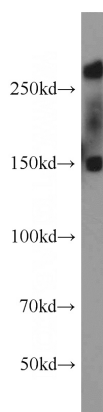
Recommended Dilution:

WB: 1:200-1:2000

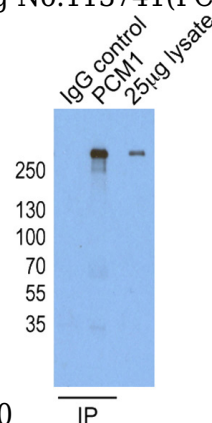
IP: 1:200-1:2000

IHC: 1:20-1:200

## Validations

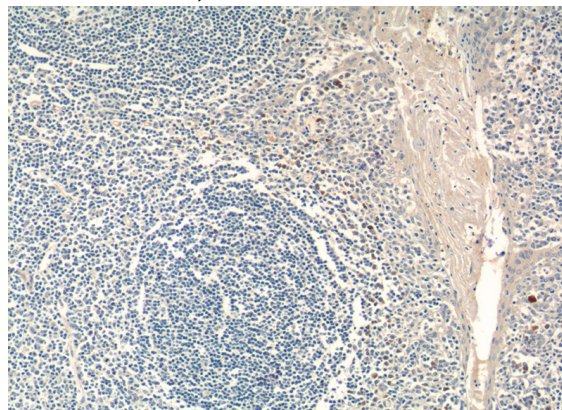


HeLa cells were subjected to SDS PAGE followed by western blot with Catalog No:113741(PCM1



antibody) at dilution of 1:500

IP result of anti-PCM1 (Catalog No:113741 for IP and Detection) with HeLa cells.



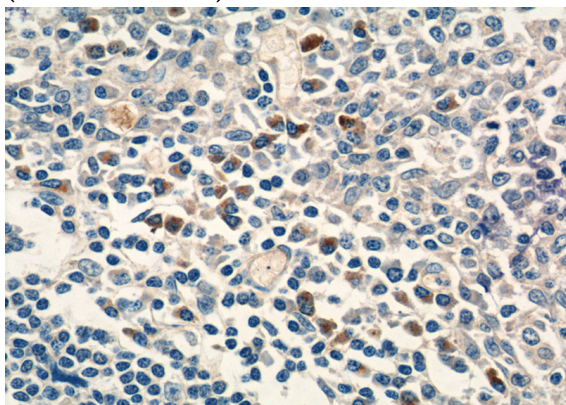
# PCM1 antibody



Catalog Number: 113741

---

Immunohistochemistry of paraffin-embedded human tonsillitis tissue slide using Catalog No:113741(PCM1 Antibody) at dilution of 1:50 (under 10x lens)



Immunohistochemistry of paraffin-embedded human tonsillitis tissue slide using Catalog No:113741(PCM1 Antibody) at dilution of 1:50 (under 40x lens)