

# EPAC2 antibody



Catalog Number: 110341

## Product name

EPAC2 antibody

IP: 1:200-1:2000

IHC: 1:20-1:200

## Specificity

Human, Mouse, Rat; other species not tested.

## Antibody description

EPAC2 Rabbit Polyclonal antibody. Positive WB detected in mouse brain tissue, HepG2 cells. Positive IP detected in mouse brain tissue. Positive IHC detected in human liver tissue. Observed molecular weight by Western-blot: 110 kDa

## Preparation

This antibody was obtained by immunization of EPAC2 recombinant protein (Accession Number: NM\_007023). Purification method: Antigen affinity purified.

## Formulation

PBS with 0.02% sodium azide and 50% glycerol pH 7.3.

## Storage

Store at -20°C. DO NOT ALIQUOT

## Clonality

Polyclonal

## Ig Type

Rabbit IgG

## Applications

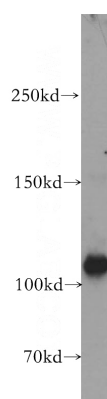
ELISA, WB, IHC, IP

## Dilutions

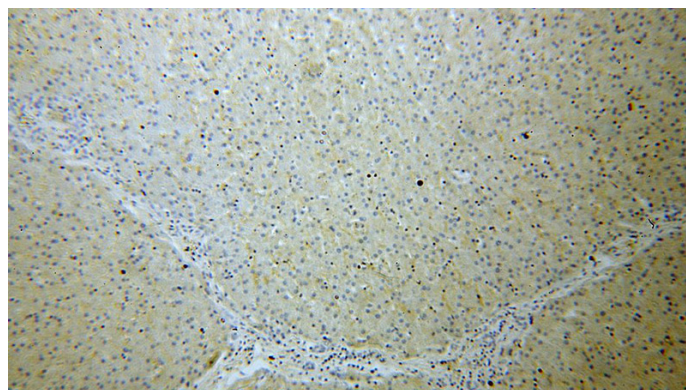
Recommended Dilution:

WB: 1:500-1:5000

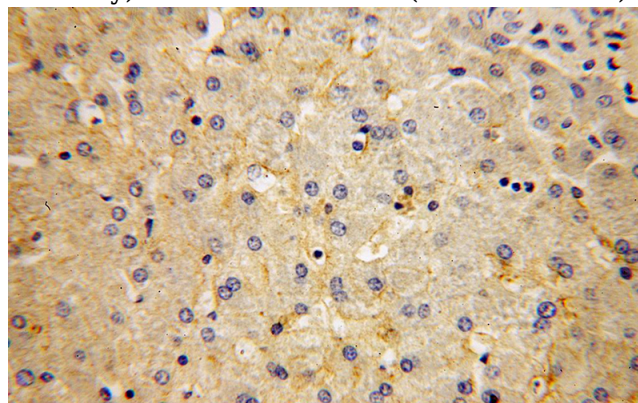
## Validations



mouse brain tissue were subjected to SDS PAGE followed by western blot with Catalog No:110341(RAPGEF4 antibody) at dilution of 1:800



Immunohistochemical of paraffin-embedded human liver using Catalog No:110341(RAPGEF4 antibody) at dilution of 1:100 (under 10x lens)



Immunohistochemical of paraffin-embedded

# EPAC2 antibody



Catalog Number: 110341

human liver using Catalog No:110341(RAPGEF4 antibody) at dilution of 1:100 (under 40x lens)

IP Result of anti-RAPGEF4 (IP:Catalog No:110341, 4ug; Detection:Catalog No:110341 1:600) with mouse brain tissue lysate 2560ug.

