

RPS28 antibody



Catalog Number: 114841

Product name

RPS28 antibody

Immunogen

[Human RPS28 Recombinant protein \(GST tag & His tag\)](#)

Specificity

human, mouse, rat; other species not tested.

Antibody description

RPS28 Rabbit Polyclonal antibody. Positive IHC detected in human pancreas cancer.

Preparation

This antibody was obtained by immunization of RPS28 recombinant protein (Accession Number: XM_047439201). Purification method: Antigen affinity purified.

Formulation

PBS with 0.02% sodium azide and 50% glycerol pH 7.3.

Storage

Store at -20°C. DO NOT ALIQUOT

Clonality

Polyclonal

Ig Type

Rabbit IgG

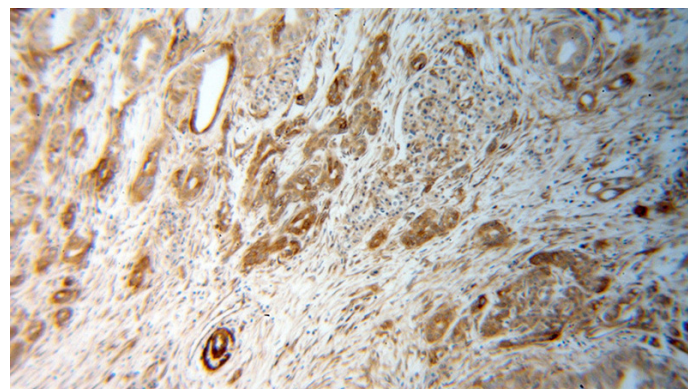
Applications

ELISA, IHC

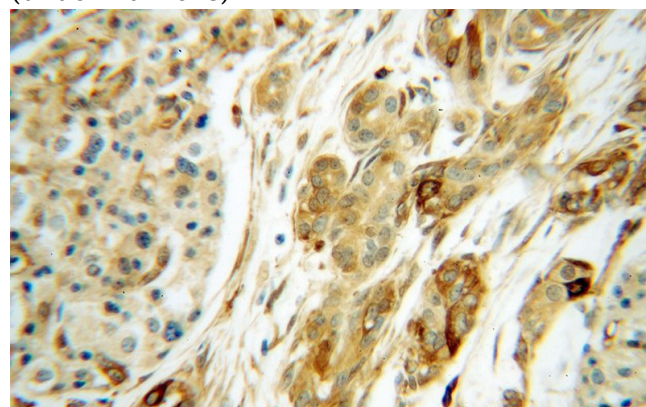
Dilutions

Recommended Dilution:
IHC: 1:20-1:200

Validations



Immunohistochemical of paraffin-embedded human pancreas cancer using Catalog No:114841(RPS28 antibody) at dilution of 1:50 (under 10x lens)



Immunohistochemical of paraffin-embedded human pancreas cancer using Catalog No:114841(RPS28 antibody) at dilution of 1:50 (under 40x lens)