

SACM1L antibody



Catalog Number: 115041

Product name

SACM1L antibody

WB: 1:500-1:5000

IP: 1:500-1:5000

Specificity

Human, Mouse, Rat; other species not tested.

IHC: 1:20-1:200

Antibody description

SACM1L Rabbit Polyclonal antibody. Positive WB detected in human kidney tissue, 3T3 cells (RNAi), human brain tissue, mouse kidney tissue, mouse lung tissue. Positive IP detected in mouse kidney tissue. Positive IHC detected in human brain tissue, human heart tissue. Observed molecular weight by Western-blot: 60-67 kDa

Preparation

This antibody was obtained by immunization of SACM1L recombinant protein (Accession Number: NM_014016). Purification method: Antigen affinity purified.

Formulation

PBS with 0.02% sodium azide and 50% glycerol pH 7.3.

Storage

Store at -20°C. DO NOT ALIQUOT

Clonality

Polyclonal

Ig Type

Rabbit IgG

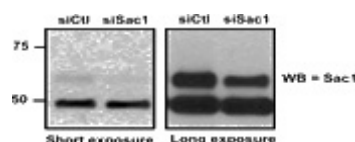
Applications

ELISA, WB, IHC, IP

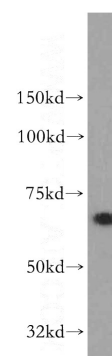
Dilutions

Recommended Dilution:

Validations

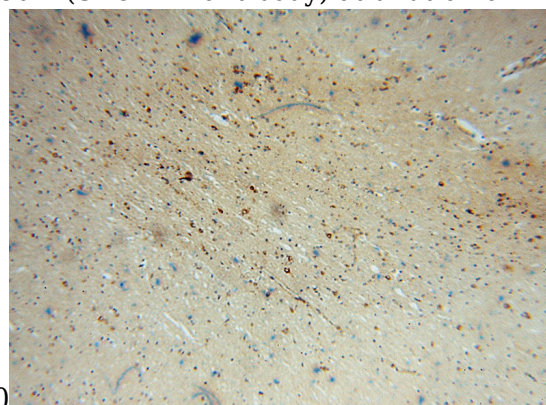


WB result of anti- SAC1 (Catalog No:115041) with



NIH-3T3 cells (RNAi).

human kidney tissue were subjected to SDS PAGE followed by western blot with Catalog No:115041(SACM1L antibody) at dilution of



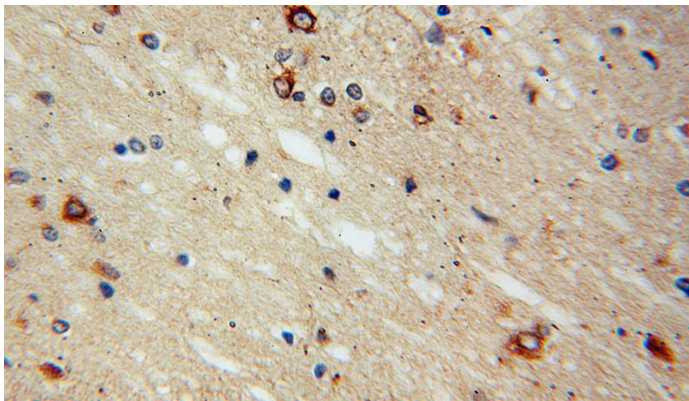
1:1000

Immunohistochemical of paraffin-embedded human brain using Catalog No:115041(SACM1L antibody) at dilution of 1:100 (under 10x lens)

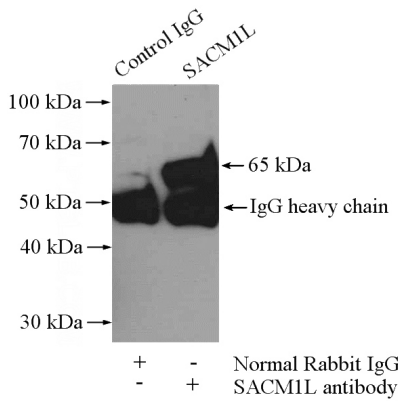
SACM1L antibody



Catalog Number: 115041



Immunohistochemical of paraffin-embedded human brain using Catalog No:115041(SACM1L antibody) at dilution of 1:100 (under 40x lens)



IP Result of anti-SACM1L (IP:Catalog No:115041, 4ug; Detection:Catalog No:115041 1:1000) with mouse kidney tissue lysate 4000ug.