

**Product name**

STOML2 antibody

**Immunogen**

[Human STOML2 Recombinant protein \(GST tag & His tag\)](#)

**Specificity**

Human, Mouse, Rat; other species not tested.

**Antibody description**

STOML2 Rabbit Polyclonal antibody. Positive IF detected in MCF-7 cells. Positive IHC detected in human lung cancer tissue, human breast cancer tissue, human endometrial cancer tissue. Positive WB detected in C6 cells, mouse brain tissue. Positive IP detected in mouse brain tissue. Observed molecular weight by Western-blot: 39 kDa

**Preparation**

This antibody was obtained by immunization of STOML2 recombinant protein (Accession Number: NM\_013442). Purification method: Antigen affinity purified.

**Formulation**

PBS with 0.1% sodium azide and 50% glycerol pH 7.3.

**Storage**

Store at -20°C. DO NOT ALIQUOT

**Clonality**

Polyclonal

**Ig Type**

Rabbit IgG

**Applications**

ELISA, IF, IP, WB, IHC

**Dilutions**

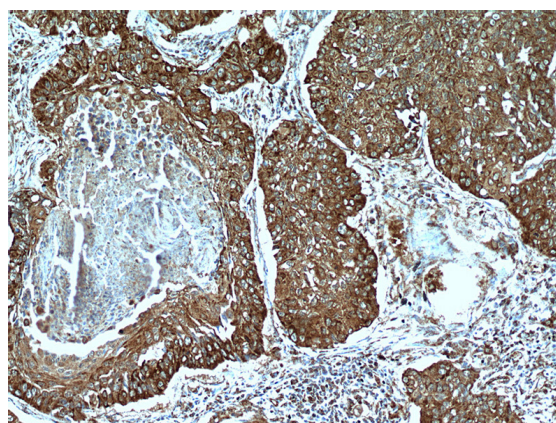
Recommended Dilution:

WB: 1:500-1:5000

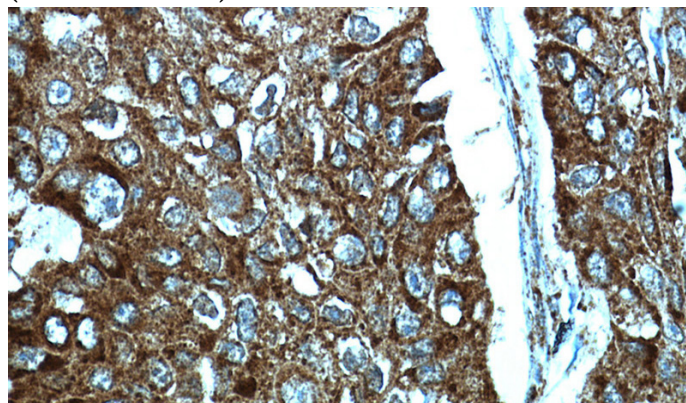
IP: 1:500-1:5000

IHC: 1:20-1:200

IF: 1:20-1:200

**Validations**

Immunohistochemical of paraffin-embedded human lung cancer using Catalog No:115731(STOML2 antibody) at dilution of 1:100 (under 10x lens)

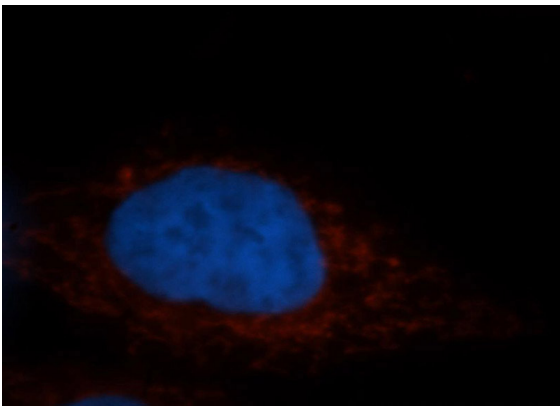


Immunohistochemical of paraffin-embedded human lung cancer using Catalog No:115731(STOML2 antibody) at dilution of 1:100 (under 40x lens)

# STOML2 antibody

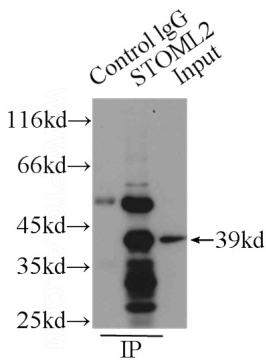


Catalog Number: 115731

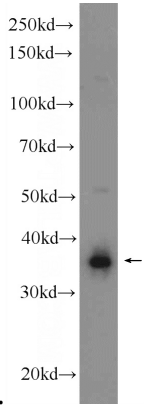


Immunofluorescent analysis of MCF-7 cells, using STOML2 antibody Catalog No:115731 at 1:50 dilution and Rhodamine-labeled goat anti-rabbit IgG (red). Blue pseudocolor = DAPI (fluorescent

DNA dye).



IP Result of anti-STOML2 (IP:Catalog No:115731, 3ug; Detection:Catalog No:115731 1:1000) with



mouse brain tissue lysate 1000ug.

C6 cells were subjected to SDS PAGE followed by western blot with Catalog No:115731(STOML2 Antibody) at dilution of 1:1000