

SIKE1 antibody



Catalog Number: 115231

Product name

SIKE1 antibody

Recommended Dilution:

WB: 1:200-1:2000

Immunogen

IHC: 1:20-1:200

[Human SIKE1 Recombinant protein \(GST tag & His tag\)](#)

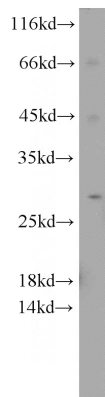
Validations

Specificity

Human, Mouse, Rat; other species not tested.

Antibody description

SIKE1 Rabbit Polyclonal antibody. Positive WB detected in mouse brain tissue. Positive IHC detected in human liver tissue, human heart tissue. Observed molecular weight by Western-blot: 26 kDa



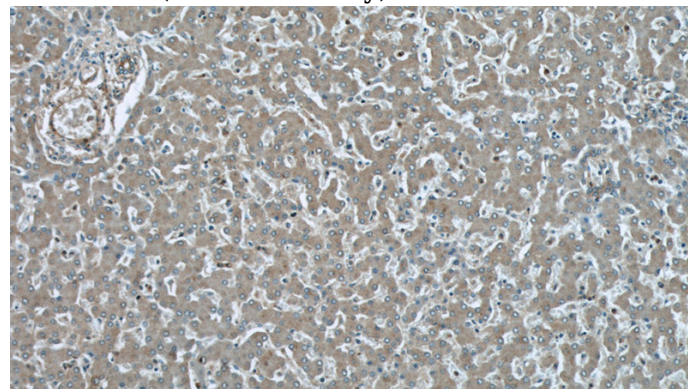
Preparation

This antibody was obtained by immunization of SIKE1 recombinant protein (Accession Number: NM_025073). Purification method: Antigen affinity purified.

mouse brain tissue were subjected to SDS PAGE followed by western blot with Catalog No:115231(SIKE1 antibody) at dilution of 1:500

Formulation

PBS with 0.02% sodium azide and 50% glycerol pH 7.3.



Storage

Store at -20°C. DO NOT ALIQUOT

Immunohistochemical of paraffin-embedded human liver using Catalog No:115231(SIKE1 antibody) at dilution of 1:50 (under 10x lens)

Clonality

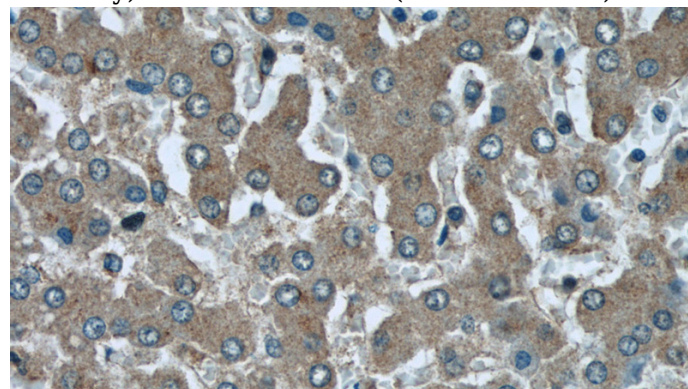
Polyclonal

Ig Type

Rabbit IgG

Applications

ELISA, WB, IHC



Dilutions

Immunohistochemical of paraffin-embedded

SIKE1 antibody



Catalog Number: 115231

human liver using Catalog No:115231(SIKE1

antibody) at dilution of 1:50 (under 40x lens)