

LIN28 antibody



Catalog Number: 112231

Product name

LIN28 antibody

IP: 1:200-1:2000

IHC: 1:20-1:200

Specificity

Human, Mouse, Rat; other species not tested.

IF: 1:20-1:200

Antibody description

LIN28 Rabbit Polyclonal antibody. Positive IHC detected in human prostate cancer tissue. Positive IF detected in human embryonic stem cells. Positive WB detected in K-562 cells, NCCIT cell. Positive IP detected in K-562 cells. Observed molecular weight by Western-blot: 28 kDa

Preparation

This antibody was obtained by immunization of LIN28 recombinant protein (Accession Number: NM_024674). Purification method: Antigen affinity purified.

Formulation

PBS with 0.1% sodium azide and 50% glycerol pH 7.3.

Storage

Store at -20°C. DO NOT ALIQUOT

Clonality

Polyclonal

Ig Type

Rabbit IgG

Applications

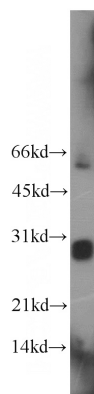
ELISA, WB, IHC, IP, IF

Dilutions

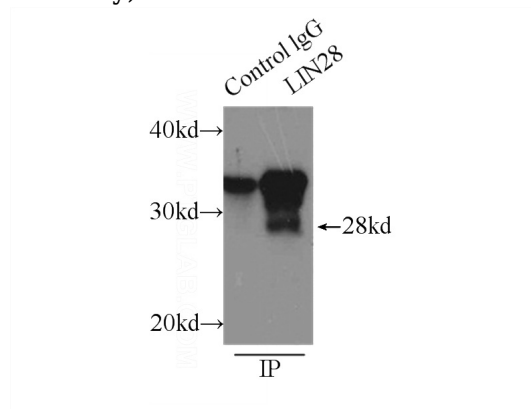
Recommended Dilution:

WB: 1:200-1:2000

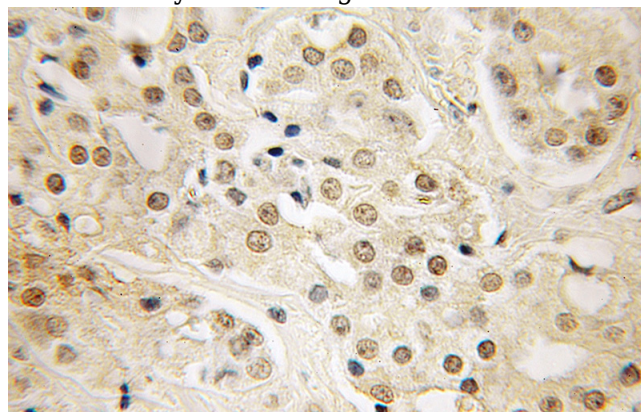
Validations



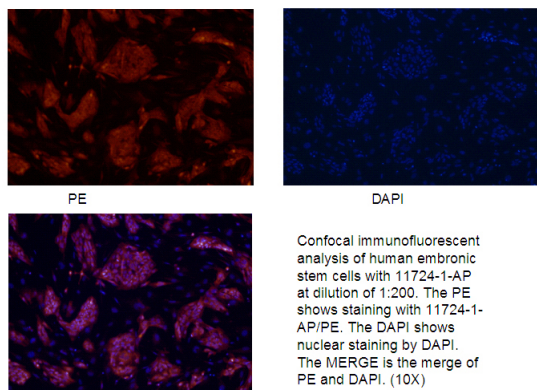
K-562 cells were subjected to SDS PAGE followed by western blot with Catalog No:112231(LIN28 antibody) at dilution of 1:300



IP Result of anti-LIN28 (IP:Catalog No:112231, 3ug; Detection:Catalog No:112231 1:500) with K-562 cells lysate 1000ug.

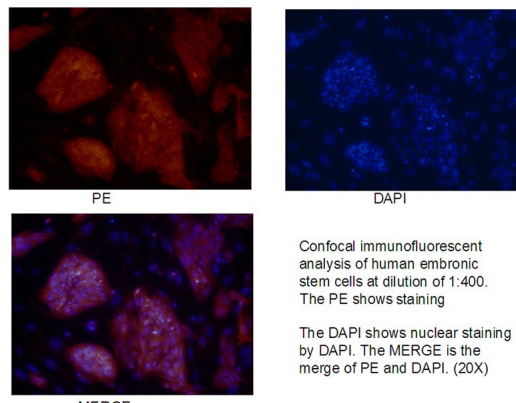


Immunohistochemical of paraffin-embedded human prostate cancer using Catalog No:112231(LIN28 antibody) at dilution of 1:50 (under 40x lens)



Confocal immunofluorescent analysis of human embryonic stem cells with Catalog No:112231 at dilution of 1:200. The PE shows staining with Catalog No:112231/PE. The DAPI shows nuclear

staining by DAPI. The MERGE is the merge of PE and DAPI.(10X)



Confocal immunofluorescent analysis of human embryonic stem cells with Catalog No:112231 at dilution of 1:400. The PE shows staining with Catalog No:112231/PE. The DAPI shows nuclear staining by DAPI. The MERGE is the merge of PE and DAPI. (20X)