

# Anti-Phospho-IGF-1R (Tyr1166) Rabbit antibody



Catalog Number: 166721

## Product name

Anti-Phospho-IGF-1R (Tyr1166) Rabbit antibody

## Ig Type

Rabbit IgG

## Specificity

Human, Mouse, Rat

## Applications

WB, IP

## Antibody description

Phospho-IGF-1R (Tyr1166) Rabbit polyclonal antibody

## Dilutions

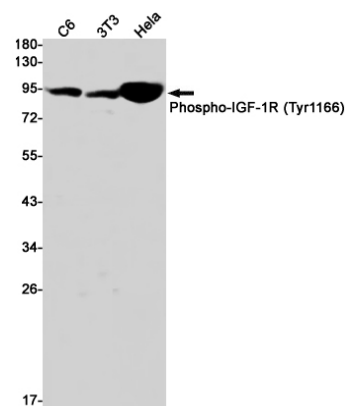
WB: 1/1000

IP: 1/20

## Preparation

Antigen: A synthetic phosphopeptide corresponding to residues surrounding Tyr1166 of human INSR/IGF-1R

## Validations



## Formulation

Supplied in 50nM Tris-Glycine(pH 7.4), 0.15M NaCl, 40%Glycerol, 0.01% sodium azide and 0.05% BSA.

Western blot detection of Phospho-IGF-1R (Tyr1166) in C6,3T3,Hela cell lysates using Phospho-IGF-1R (Tyr1166) Rabbit pAb(1:1000 diluted).Predicted band size:155kDa.Observed band size:95kDa.

## Storage

Store at -20°C. Stable for 12 months from date of receipt.

## Clonality

Polyclonal