

# GYS1 antibody



Catalog Number: 111321

## Product name

GYS1 antibody

Recommended Dilution:

WB: 1:200-1:2000

## Specificity

Human, Mouse, Rat; other species not tested.

IP: 1:200-1:1000

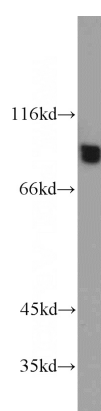
IHC: 1:20-1:200

## Antibody description

GYS1 Rabbit Polyclonal antibody. Positive FC detected in HepG2 cells. Positive IHC detected in human prostate cancer tissue, human skeletal muscle tissue. Positive IF detected in HepG2 cells. Positive IP detected in mouse skeletal muscle tissue. Positive WB detected in K-562 cells, HeLa cells. Observed molecular weight by Western-blot: 84 kDa

IF: 1:20-1:200

## Validations



K-562 cells were subjected to SDS PAGE followed by western blot with Catalog No:111321(GYS1 antibody) at dilution of 1:500

## Preparation

This antibody was obtained by immunization of GYS1 recombinant protein (Accession Number: NM\_002103). Purification method: Antigen affinity purified.

## Formulation

PBS with 0.1% sodium azide and 50% glycerol pH 7.3.

## Storage

Store at -20°C. DO NOT ALIQUOT

## Clonality

Polyclonal

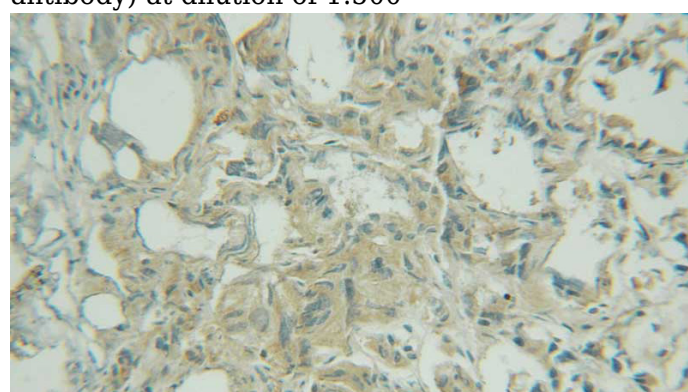
## Ig Type

Rabbit IgG

## Applications

ELISA, WB, IHC, IF, FC, IP

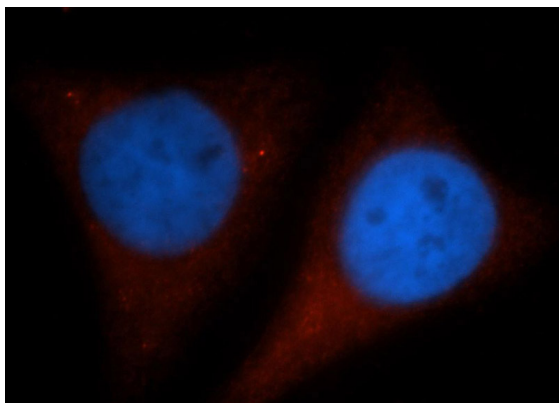
## Dilutions



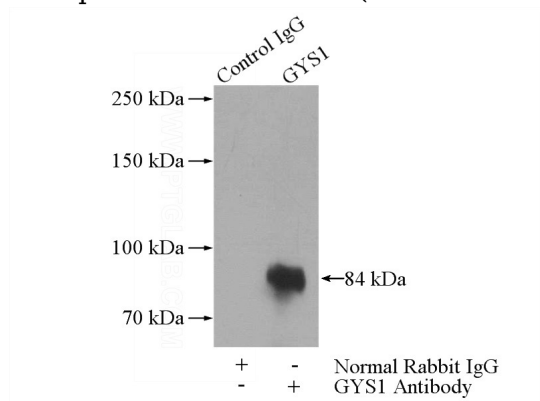
Immunohistochemical of paraffin-embedded human prostate cancer using Catalog No:111321(GYS1 antibody) at dilution of 1:50 (under 25x lens)

# GYS1 antibody

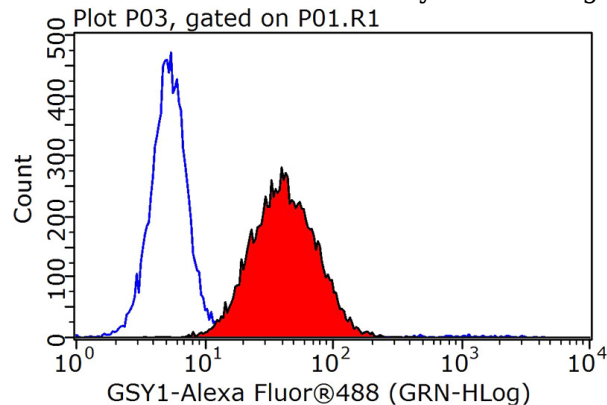
Catalog Number: 111321



Immunofluorescent analysis of HepG2 cells, using GYS1 antibody Catalog No:111321 at 1:50 dilution and Rhodamine-labeled goat anti-rabbit IgG (red). Blue pseudocolor = DAPI (fluorescent DNA dye).



IP Result of anti-GYS1 (IP:Catalog No:111321, 4ug; Detection:Catalog No:111321 1:300) with mouse skeletal muscle tissue lysate 2200ug.



1X10<sup>6</sup> HepG2 cells were stained with 0.2ug GYS1 antibody (Catalog No:111321, red) and control antibody (blue). Fixed with 90% MeOH blocked with 3% BSA (30 min). Alexa Fluor 488-conjugated AffiniPure Goat Anti-Rabbit IgG(H+L) with dilution 1:1000.