

TGFBI / BIGH3 antibody



Catalog Number: 107621

Product name

TGFBI / BIGH3 antibody

IP: 1:200-1:1000

IHC: 1:20-1:200

Specificity

Human, Mouse; other species not tested.

Antibody description

TGFBI / BIGH3 Mouse Monoclonal antibody. Positive WB detected in LEC cells. Positive IP detected in HeLa cells. Positive IHC detected in human kidney tissue, human pancreas cancer tissue, human skin tissue. Observed molecular weight by Western-blot: 68 kDa

Preparation

This antibody was obtained by immunization of TGFBI / BIGH3 recombinant protein (Accession Number: NM_000358). Purification method: Caprylic acid/ammonium sulfate precipitation.

Formulation

PBS with 0.1% sodium azide and 50% glycerol pH 7.3.

Storage

Store at -20°C. DO NOT ALIQUOT

Clonality

Monoclonal

Ig Type

Mouse IgG2a

Applications

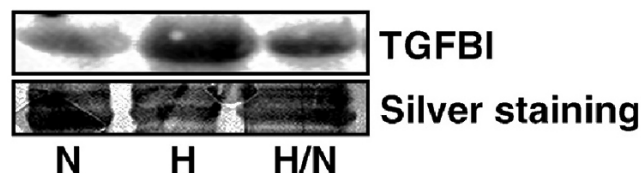
ELISA, IHC, WB, IP

Dilutions

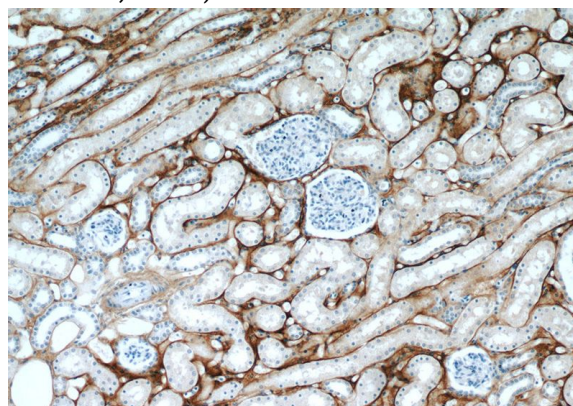
Recommended Dilution:

WB: 1:200-1:2000

Validations



WB detection of anti-TGFBI in the extracellularmedia of LEC grown for 24 h under normoxia (N), hypoxia (H) or hypoxia and reoxygenation (H/N) for 6 h. One result representative of at least three different experiments is shown. Silver staining of the membranes was used as loading control. (From PMID:18560760; Irigoyen M, et al, TGFbeta-induced protein mediates lymphatic endothelial cell adhesion to the extracellular matrix under low oxygen conditions, Cell Mol Life Sci. 65(14), 2244-55, 2008)

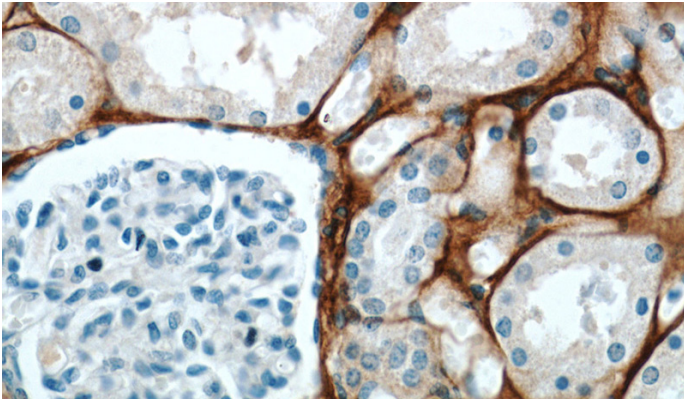


Immunohistochemical of paraffin-embedded human kidney using Catalog No:107621(BIGH3 antibody) at dilution of 1:50 (under 10x lens)

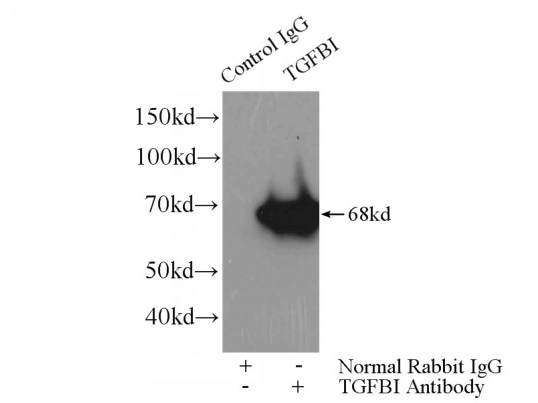
TGFBI / BIGH3 antibody



Catalog Number: 107621



Immunohistochemical of paraffin-embedded human kidney using Catalog No:107621(BIGH3 antibody) at dilution of 1:50 (under 40x lens)



IP Result of anti-BIGH3 (IP:Catalog No:107621, 4ug; Detection:Catalog No:107621 1:300) with HeLa cells lysate 1200ug.