

Anti-Phospho-EGF Receptor (Tyr1172) Rabbit antibody



Catalog Number: 167121

Product name

Anti-Phospho-EGF Receptor (Tyr1172) Rabbit antibody

Specificity

Human, Mouse, Rat

Antibody description

Phospho-EGF Receptor (Tyr1172) Rabbit polyclonal antibody

Preparation

Antigen: Peptide sequence around phosphorylation site of tyrosine 1172 (P-D-Y(p)-Q-Q) derived from Human EGFR.

Formulation

Supplied at 1.0mg/mL in phosphate buffered saline (without Mg²⁺ and Ca²⁺), pH 7.4, 150mM NaCl, 0.02% sodium azide and 50% glycerol.

Storage

Store at 4°C short term. Store at -20°C long term. Avoid freeze / thaw cycle.

Clonality

Polyclonal

Ig Type

Rabbit IgG

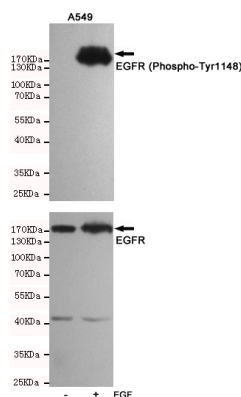
Applications

WB, IHC-P

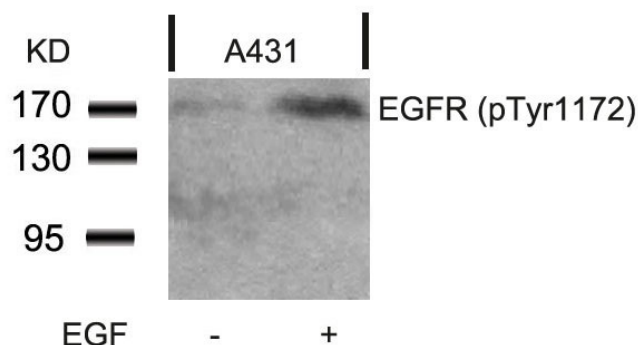
Dilutions

WB:1/500-1/1000 IHC:1/50-1/100

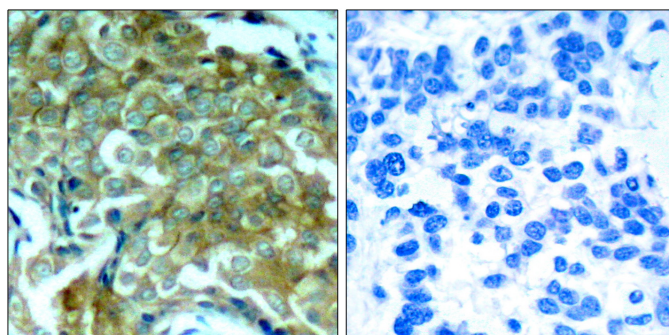
Validations



Western blot analysis of extracts from A549 cells, untreated or treated with EGF(10ng/ml,10min), using EGFR (Phospho-Tyr1148) Rabbit pAb (167121,1:500 diluted,upper) and EGFR Receptor Mouse mAb (201012-3F12,lower).



Western blot analysis of extracts from A431 cells untreated or treated with EGF using EGFR (Phospho-Tyr1172) Antibody .



Immunohistochemical analysis of paraffin-embedded human breast carcinoma tissue using EGFR (Phospho-Tyr1172) Antibody (left) or the same antibody preincubated with blocking peptide (right).