

SMAD5 antibody



Catalog Number: 115421

Product name

SMAD5 antibody

Recommended Dilution:

WB: 1:500-1:5000

Immunogen

[Human SMAD5 Recombinant protein \(GST tag & His tag\)](#)

IP: 1:500-1:5000

IF: 1:10-1:100

Specificity

Human, Mouse, Rat; other species not tested.

Antibody description

SMAD5 Rabbit Polyclonal antibody. Positive FC detected in MCF-7 cells. Positive IF detected in MCF-7 cells. Positive WB detected in K-562 cells. Positive IP detected in K-562 cells. Observed molecular weight by Western-blot: 52 kDa

Preparation

This antibody was obtained by immunization of SMAD5 recombinant protein (Accession Number: XM_017009470). Purification method: Antigen affinity purified.

Formulation

PBS with 0.1% sodium azide and 50% glycerol pH 7.3.

Storage

Store at -20°C. DO NOT ALIQUOT

Clonality

Polyclonal

Ig Type

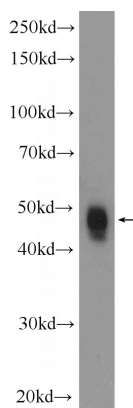
Rabbit IgG

Applications

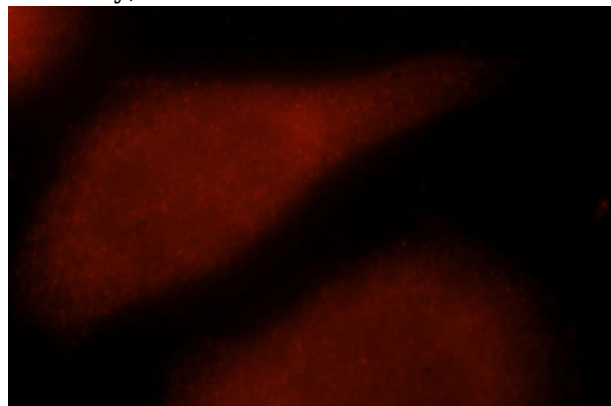
ELISA, IF, WB, FC, IP

Dilutions

Validations



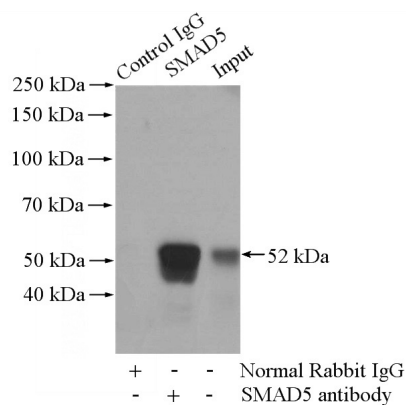
K-562 cells were subjected to SDS PAGE followed by western blot with Catalog No:115421(SMAD5 Antibody) at dilution of 1:1000



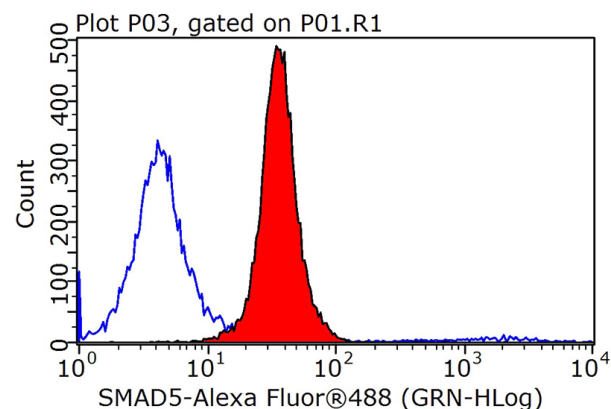
Immunofluorescent analysis of MCF-7 cells, using SMAD5 antibody Catalog No:115421 at 1:25 dilution and Rhodamine-labeled goat anti-rabbit

SMAD5 antibody

Catalog Number: 115421



IgG (red).



IP Result of anti-SMAD5 (IP:Catalog No:115421, 4ug; Detection:Catalog No:115421 1:1000) with K-562 cells lysate 3200ug.

1X10⁶ MCF-7 cells were stained with 0.2ug SMAD5 antibody (Catalog No:115421, red) and control antibody (blue). Fixed with 90% MeOH blocked with 3% BSA (30 min). Alexa Fluor 488-conjugated AffiniPure Goat Anti-Rabbit IgG(H+L) with dilution 1:1000.