

KCTD5 antibody



Catalog Number: 112021

Product name

KCTD5 antibody

Immunogen

[Human KCTD5 Recombinant protein \(GST tag & His tag\)](#)

Specificity

Human, Mouse, Rat; other species not tested.

Antibody description

KCTD5 Rabbit Polyclonal antibody. Positive WB detected in HeLa cells, human brain tissue. Positive IP detected in HeLa cells. Positive IF detected in HeLa cells. Positive IHC detected in human ovary tumor tissue. Positive FC detected in HeLa cells. Observed molecular weight by Western-blot: 26kd

Preparation

This antibody was obtained by immunization of KCTD5 recombinant protein (Accession Number: NM_018992). Purification method: Antigen affinity purified.

Formulation

PBS with 0.02% sodium azide and 50% glycerol pH 7.3.

Storage

Store at -20°C. DO NOT ALIQUOT

Clonality

Polyclonal

Ig Type

Rabbit IgG

Applications

ELISA, WB, IHC, IF, FC, IP

Dilutions

Recommended Dilution:

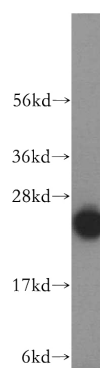
WB: 1:500-1:5000

IP: 1:200-1:2000

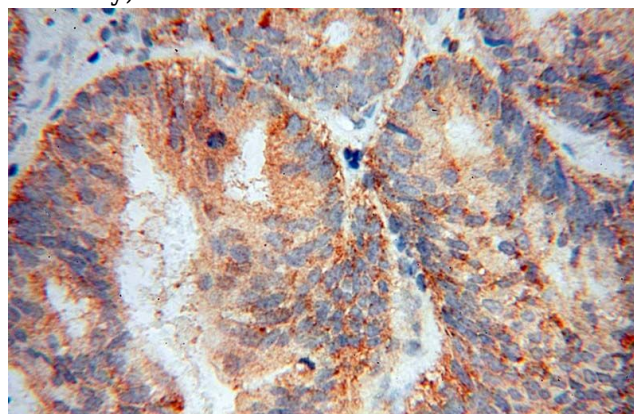
IHC: 1:20-1:200

IF: 1:10-1:100

Validations



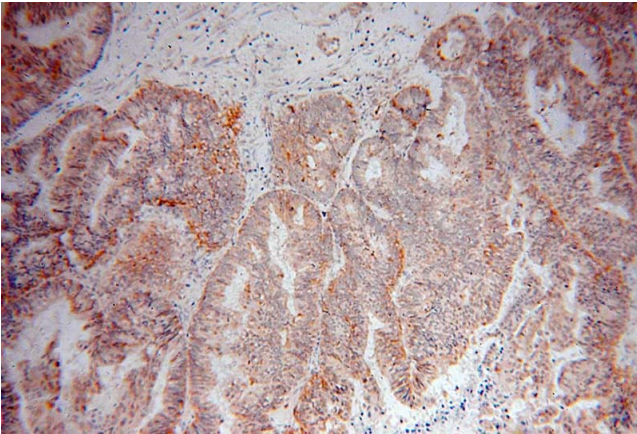
HeLa cells were subjected to SDS PAGE followed by western blot with Catalog No:112021(KCTD5 antibody) at dilution of 1:500



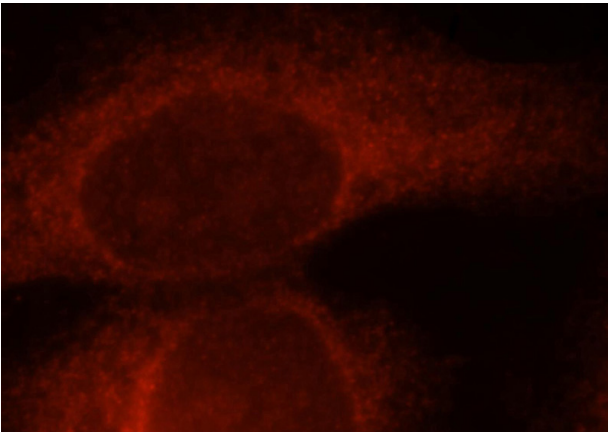
Immunohistochemical of paraffin-embedded human ovary tumor using Catalog No:112021(KCTD5 antibody) at dilution of 1:50 (under 40x lens)

KCTD5 antibody

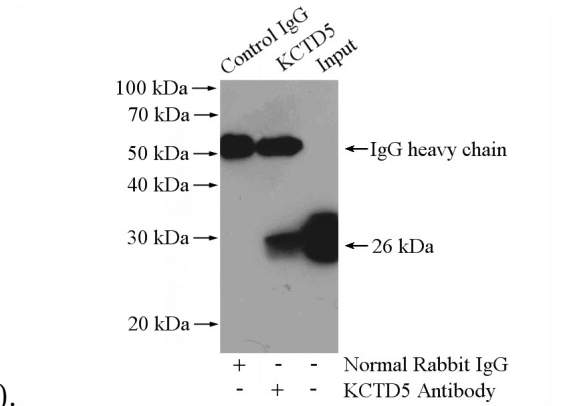
Catalog Number: 112021



Immunohistochemical of paraffin-embedded human ovary tumor using Catalog No:112021(KCTD5 antibody) at dilution of 1:50 (under 10x lens)

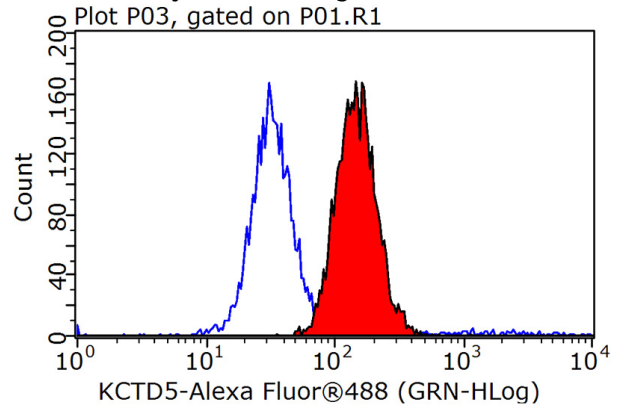


Immunofluorescent analysis of HeLa cells, using KCTD5 antibody Catalog No:112021 at 1:25 dilution and Rhodamine-labeled goat anti-rabbit



IgG (red).

IP Result of anti-KCTD5 (IP:Catalog No:112021, 4ug; Detection:Catalog No:112021 1:500) with HeLa cells lysate 1200ug.



1X10⁶ HeLa cells were stained with 0.2ug KCTD5 antibody (Catalog No:112021, red) and control antibody (blue). Fixed with 90% MeOH blocked with 3% BSA (30 min). Alexa Fluor 488-conjugated AffiniPure Goat Anti-Rabbit IgG(H+L) with dilution 1:1000.