

ATP6V1E1 antibody



Catalog Number: 108311

Product name

ATP6V1E1 antibody

IP: 1:200-1:2000

IHC: 1:20-1:200

Specificity

Human, Mouse, Rat; other species not tested.

Antibody description

ATP6V1E1 Rabbit Polyclonal antibody. Positive IHC detected in human testis tissue. Positive WB detected in human brain tissue, HEK-293 cells, HeLa cells, human liver tissue. Positive IP detected in mouse brain tissue. Observed molecular weight by Western-blot: 31kd

Preparation

This antibody was obtained by immunization of ATP6V1E1 recombinant protein (Accession Number: NM_001696). Purification method: Antigen affinity purified.

Formulation

PBS with 0.02% sodium azide and 50% glycerol pH 7.3.

Storage

Store at -20°C. DO NOT ALIQUOT

Clonality

Polyclonal

Ig Type

Rabbit IgG

Applications

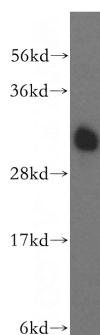
ELISA, WB, IHC, IP

Dilutions

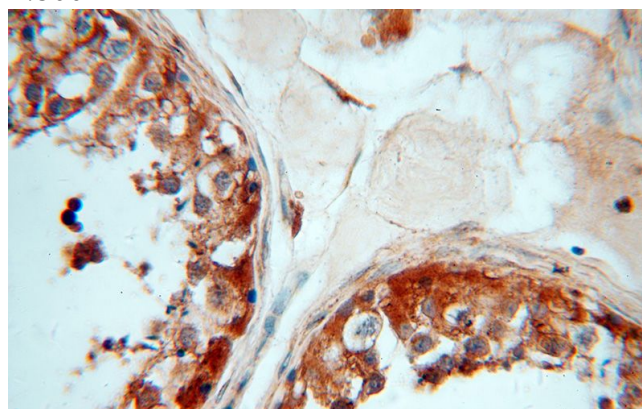
Recommended Dilution:

WB: 1:500-1:5000

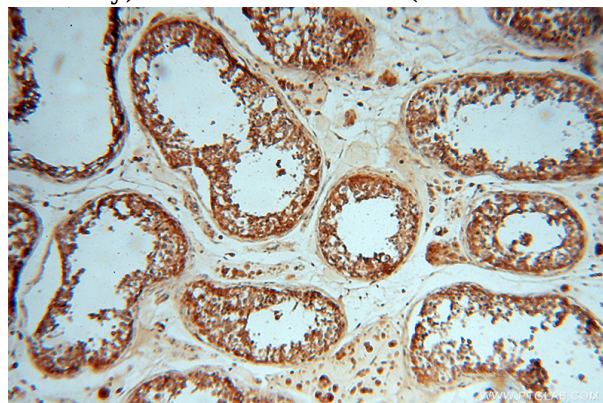
Validations



human brain tissue were subjected to SDS PAGE followed by western blot with Catalog No:108311(ATP6V1E1 antibody) at dilution of 1:500



Immunohistochemical of paraffin-embedded human testis using Catalog No:108311(ATP6V1E1 antibody) at dilution of 1:100 (under 40x lens)



Immunohistochemical of paraffin-embedded

ATP6V1E1 antibody

Catalog Number: 108311

human testis using Catalog No:108311(ATP6V1E1 antibody) at dilution of 1:100 (under 10x lens)

IP Result of anti-ATP6V1E1 (IP:Catalog No:108311, 3ug; Detection:Catalog No:108311 1:500) with mouse brain tissue lysate 6000ug.

