

RBM39 antibody



Catalog Number: 114611

Product name

RBM39 antibody

Recommended Dilution:

WB: 1:500-1:5000

Immunogen

[Human RBM39 Recombinant protein \(GST tag & His tag\)](#)

IHC: 1:20-1:200

Specificity

Human, Mouse, Rat; other species not tested.

Antibody description

RBM39 Rabbit Polyclonal antibody. Positive IHC detected in human pancreas tissue. Positive WB detected in HEK-293T cells, human skeletal muscle tissue, mouse kidney tissue. Observed molecular weight by Western-blot: 60-70kd

Preparation

This antibody was obtained by immunization of RBM39 recombinant protein (Accession Number: NM_184234). Purification method: Antigen affinity purified.

Formulation

PBS with 0.02% sodium azide and 50% glycerol pH 7.3.

Storage

Store at -20°C. DO NOT ALIQUOT

Clonality

Polyclonal

Ig Type

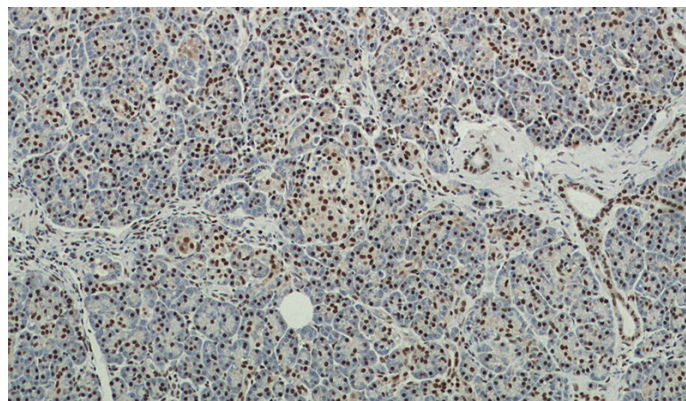
Rabbit IgG

Applications

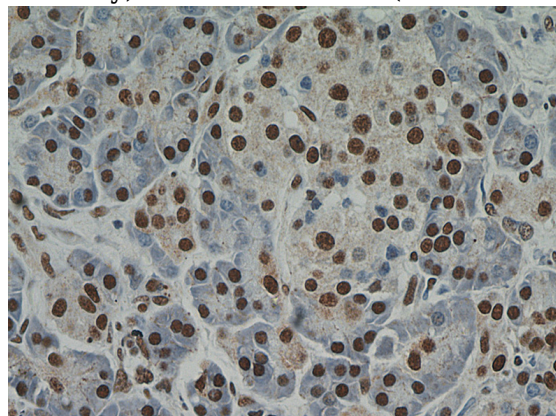
ELISA, IHC, WB

Dilutions

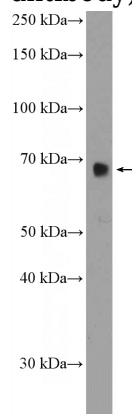
Validations



Immunohistochemical of paraffin-embedded human pancreas using Catalog No:114611(RBM39 antibody) at dilution of 1:50 (under 10x lens)



Immunohistochemical of paraffin-embedded human pancreas using Catalog No:114611(RBM39 antibody) at dilution of 1:50 (under 40x lens)



RBM39 antibody



Catalog Number: 114611

HEK-293T cells were subjected to SDS PAGE

followed by western blot with Catalog
No:114611(RBM39 Antibody) at dilution of 1:1000