

# EEF1D Polyclonal Antibody



Catalog Number: 163811

## Product name

EEF1D Polyclonal Antibody

## Specificity

Human, Mouse, Rat

## Antibody description

Polyclonal antibody to EEF1D

## Preparation

Antigen: Recombinant fusion protein containing a sequence corresponding to amino acids 1-160 of human EEF1D (NP\_001123529.1).

## Formulation

PBS with 0.02% sodium azide, 50% glycerol, pH7.3.

## Storage

Store at -20°C. Avoid freeze / thaw cycles.

## Clonality

Polyclonal

## Ig Type

Rabbit IgG

## Applications

WB, IHC, IF

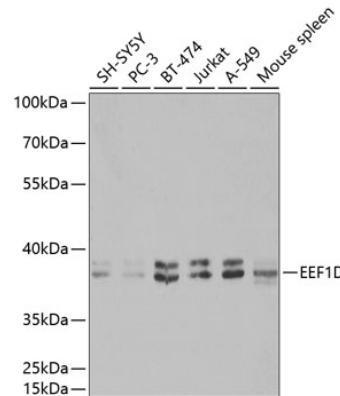
## Dilutions

WB 1:500 - 1:2000

IHC 1:50 - 1:200

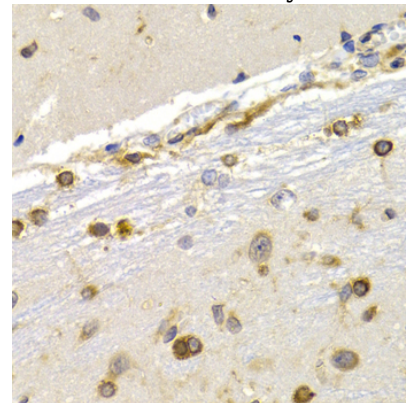
IF 1:50 - 1:200

## Validations



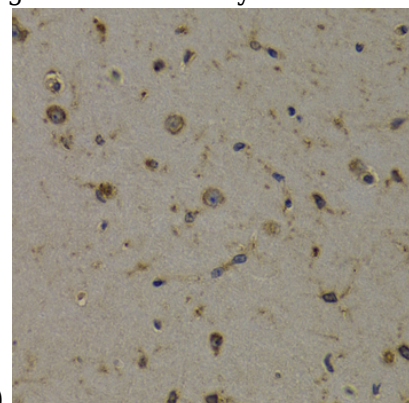
Western blot - EEF1D Polyclonal Antibody

Western blot analysis of extracts of various cell lines, using EEF1D antibody at 1:1000 dilution. Secondary antibody: HRP Goat Anti-Rabbit IgG (H+L) at 1:10000 dilution. Lysates/proteins: 25ug per lane. Blocking buffer: 3% nonfat dry milk in TBST.



Immunohistochemistry - EEF1D Polyclonal Antibody

Immunohistochemistry of paraffin-embedded rat brain using EEF1D antibody at dilution of 1:200



(40x lens).

# EEF1D Polyclonal Antibody

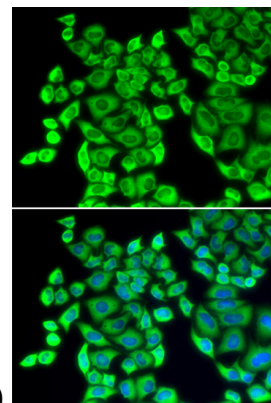


Catalog Number: 163811

---

Immunohistochemistry - EEF1D Polyclonal Antibody

Immunohistochemistry of paraffin-embedded mouse brain using EEF1D antibody at dilution of



1:200 (40x lens).

Immunofluorescence - EEF1D Polyclonal Antibody

Immunofluorescence analysis of U2OS cells using EEF1D antibody . Blue: DAPI for nuclear staining.