

# Anti-Phospho-MEK1 (Ser298) Rabbit antibody



Catalog Number: 167411

## Product name

Polyclonal

Anti-Phospho-MEK1 (Ser298) Rabbit antibody

## Ig Type

Rabbit IgG

## Specificity

Human, Mouse, Rat

## Applications

WB, ICC/IF

## Antibody description

Phospho-MEK1 (Ser298) Rabbit polyclonal antibody

## Dilutions

WB: 1/1000

## Preparation

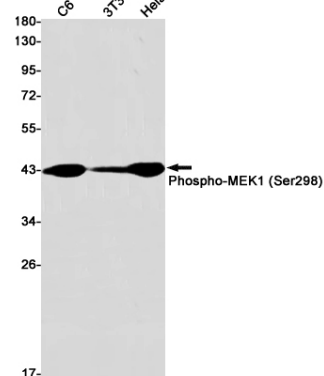
ICC/IF: 1/50

Antigen: A synthetic phosphopeptide corresponding to residues surrounding Ser298 of human MEK1

## Validations

## Formulation

Supplied in 50nM Tris-Glycine(pH 7.4), 0.15M NaCl, 40%Glycerol, 0.01% sodium azide and 0.05% BSA.



## Storage

Store at -20°C. Stable for 12 months from date of receipt.

Western blot detection of Phospho-MEK1 (Ser298) in C6,3T3,HeLa cell lysates using Phospho-MEK1 (Ser298) Rabbit pAb(1:1000 diluted).Predicted band size:43kDa.Observed band size:43kDa.

## Clonality