

# Anti-HER2/ErbB2 antibody



Catalog Number: 106011

## Product name

Anti-HER2/ErbB2 antibody

## Immunogen

[Mouse HER2/ErbB2 \(His Tag\) recombinant protein](#)

## Specificity

Mouse HER2 / ErbB2

## Antibody description

Rabbit polyclonal to HER2/ErbB2

## Preparation

Produced in rabbits immunized with purified, recombinant Mouse HER2 / ErbB2 (rh HER2 / ErbB2; P70424; Met1-Thr653). HER2 / ErbB2 specific IgG was purified by Mouse HER2 / ErbB2 affinity chromatography.

## Formulation

0.2 µm filtered solution in PBS

## Storage

This antibody can be stored at 2°C-8°C for one month without detectable loss of activity. Antibody products are stable for twelve months from date of receipt when stored at -20°C to -80°C.

Preservative-Free.

Sodium azide is recommended to avoid contamination (final concentration 0.05%-0.1%). It is toxic to cells and should be disposed of

properly. Avoid repeated freeze-thaw cycles.

## Clonality

Polyclonal

## Ig Type

Rabbit IgG

## Applications

ELISA, WB

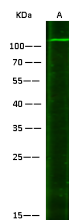
## Dilutions

WB: 10-20 µg/ml

ELISA:0.1-0.2 µg/mL

This antibody can be used at 0.1-0.2 µg/mL with the appropriate secondary reagents to detect Mouse HER2 / ErbB2. The detection limit for Mouse HER2 / ErbB2 is 0.00245 ng/well.

## Validations



Items	Lanes
Sample (whole cell lysate)	HeLa
Sample Volume (µg/lane)	30
Gel	13% SDS-PAGE reducing gel
Recommended Concentration	10-20 µg/ml
Secondary Antibody	Dylight 800-labeled Antibody To Rabbit IgG (H+L), at 1:5000 dilution.

HER2 / ErbB2 Antibody, Rabbit PAb, Antigen Affinity Purified, Western blot