

# CBLL1 antibody



Catalog Number: 108901

## Product name

CBLL1 antibody

IHC: 1:20-1:200

IF: 1:10-1:100

## Specificity

human, mouse, rat; other species not tested.

## Antibody description

CBLL1 Rabbit Polyclonal antibody. Positive WB detected in DU 145 cells, HEK-293 cells, HeLa cells, MCF7 cells, L02 cells. Positive IF detected in HepG2. Positive IHC detected in human breast cancer. Observed molecular weight by Western-blot: 56kd

## Preparation

This antibody was obtained by immunization of CBLL1 recombinant protein (Accession Number: NM\_024814). Purification method: Antigen affinity purified.

## Formulation

PBS with 0.02% sodium azide and 50% glycerol pH 7.3.

## Storage

Store at -20°C. DO NOT ALIQUOT

## Clonality

Polyclonal

## Ig Type

Rabbit IgG

## Applications

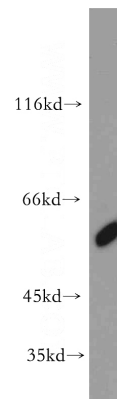
ELISA, WB, IHC, IF

## Dilutions

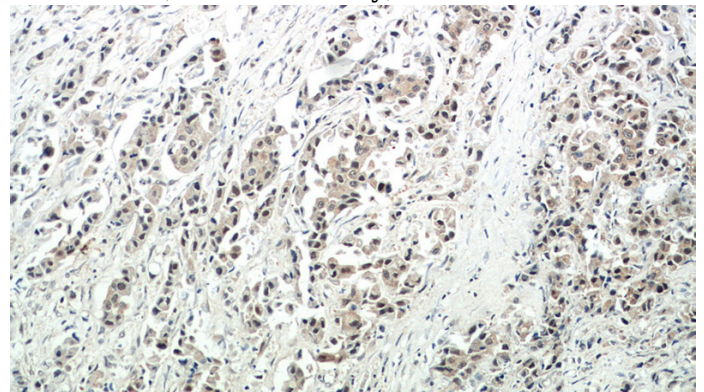
Recommended Dilution:

WB: 1:500-1:5000

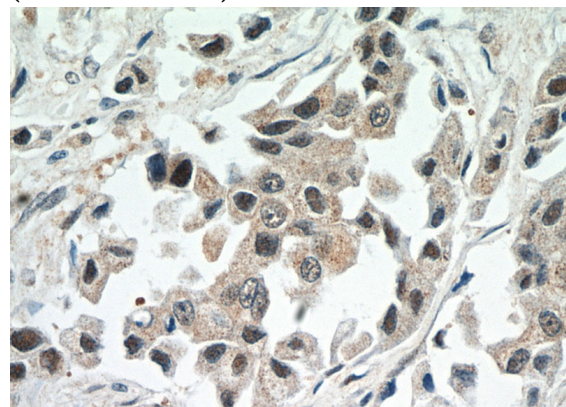
## Validations



DU 145 cells were subjected to SDS PAGE followed by western blot with Catalog No:108901(CBLL1 antibody) at dilution of 1:500



Immunohistochemical of paraffin-embedded human breast cancer using Catalog No:108901(CBLL1 antibody) at dilution of 1:50 (under 10x lens)



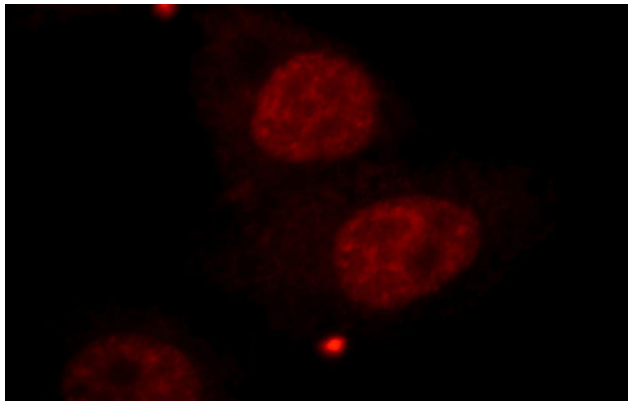
Immunohistochemical of paraffin-embedded

# CBLL1 antibody

Catalog Number: 108901

---

human breast cancer using Catalog No:108901(CBLL1 antibody) at dilution of 1:50 (under 40x lens)



Immunofluorescent analysis of HepG2 cells, using CBLL1 antibody Catalog No:108901 at 1:25 dilution and Rhodamine-labeled goat anti-rabbit IgG (red).