

# PSMD2 antibody



Catalog Number: 114398

## Product name

PSMD2 antibody

IP: 1:200-1:2000

IF: 1:20-1:200

## Specificity

Human; other species not tested.

## Antibody description

PSMD2 Rabbit Polyclonal antibody. Positive IP detected in K-562 cells. Positive WB detected in human heart tissue, HeLa cells, K-562 cells, mouse skeletal muscle tissue, rat heart tissue. Positive IF detected in HeLa cells. Observed molecular weight by Western-blot: 97 kDa

## Preparation

This antibody was obtained by immunization of PSMD2 recombinant protein (Accession Number: NM\_002808). Purification method: Antigen affinity purified.

## Formulation

PBS with 0.02% sodium azide and 50% glycerol pH 7.3.

## Storage

Store at -20°C. DO NOT ALIQUOT

## Clonality

Polyclonal

## Ig Type

Rabbit IgG

## Applications

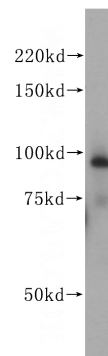
ELISA, WB, IP, IF

## Dilutions

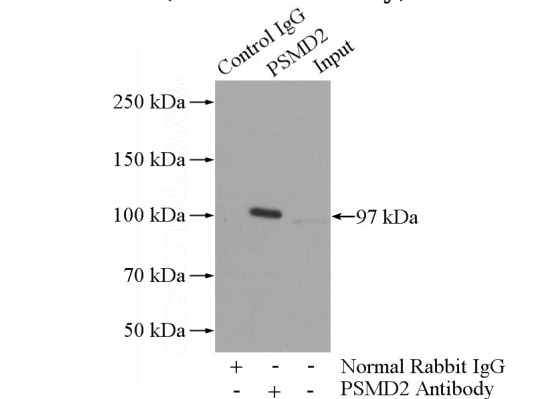
Recommended Dilution:

WB: 1:500-1:5000

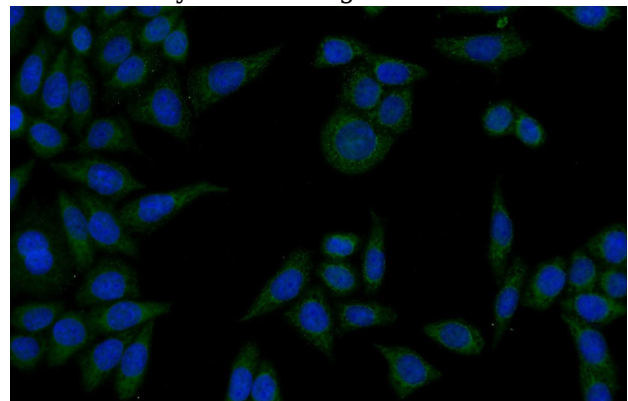
## Validations



human heart tissue were subjected to SDS PAGE followed by western blot with Catalog No:114398(PSMD2 antibody) at dilution of 1:500



IP Result of anti-PSMD2 (IP:Catalog No:114398, 3ug; Detection:Catalog No:114398 1:500) with K-562 cells lysate 3600ug.



Immunofluorescent analysis of HeLa cells using Catalog No:114398(PSMD2 Antibody) at dilution

# PSMD2 antibody



Catalog Number: 114398

---

of 1:50 and Alexa Fluor 488-conjugated AffiniPure Goat Anti-Rabbit IgG(H+L)