

Bif-1 antibody



Catalog Number: 108498

Product name

Bif-1 antibody

Immunogen

[Human SH3GLB1 Recombinant protein \(GST tag & His tag\)](#)

Specificity

Human, Mouse, Rat; other species not tested.

Antibody description

Bif-1 Rabbit Polyclonal antibody. Positive WB detected in mouse kidney tissue, HEK-293 cells, human placenta tissue, mouse heart tissue, mouse placenta tissue. Positive IHC detected in human kidney tissue. Positive IF detected in HepG2 cells. Observed molecular weight by Western-blot: 41kd

Preparation

This antibody was obtained by immunization of Bif-1 recombinant protein (Accession Number: NM_016009). Purification method: Antigen affinity purified.

Formulation

PBS with 0.02% sodium azide and 50% glycerol pH 7.3.

Storage

Store at -20°C. DO NOT ALIQUOT

Clonality

Polyclonal

Ig Type

Rabbit IgG

Applications

ELISA, WB, IHC, IF

Dilutions

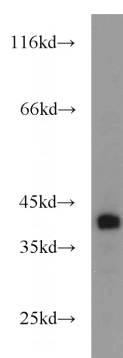
Recommended Dilution:

WB: 1:500-1:5000

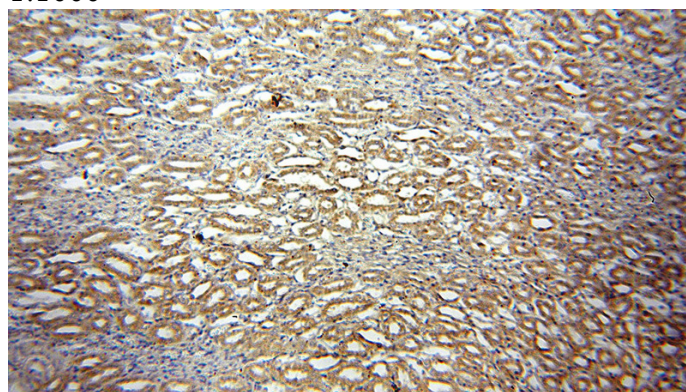
IHC: 1:20-1:200

IF: 1:10-1:100

Validations



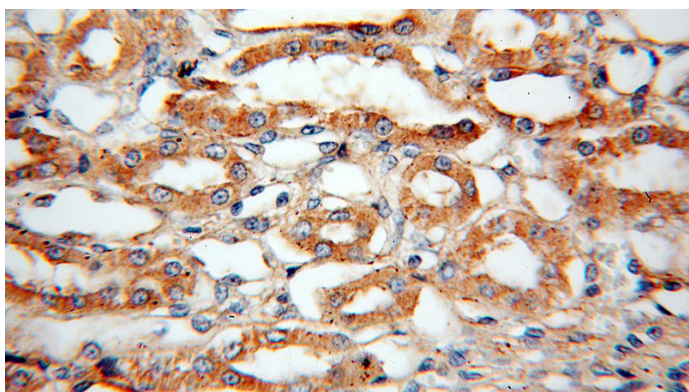
mouse kidney tissue were subjected to SDS PAGE followed by western blot with Catalog No:117143(SH3GLB1 antibody) at dilution of 1:1000



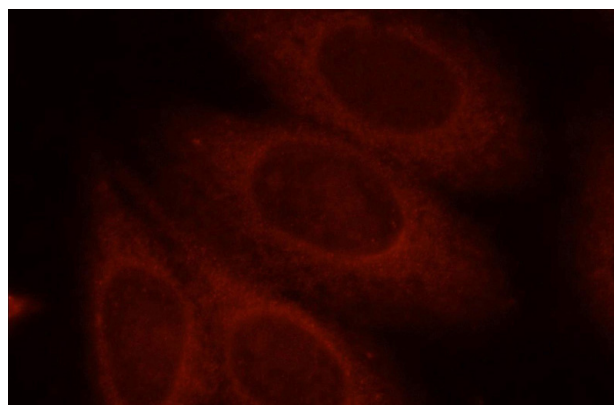
Immunohistochemical of paraffin-embedded human kidney using Catalog No:117143(SH3GLB1 antibody) at dilution of 1:100 (under 10x lens)

Bif-1 antibody

Catalog Number: 108498



Immunohistochemical of paraffin-embedded human kidney using Catalog No:117143(SH3GLB1 antibody) at dilution of 1:100 (under 40x lens)



Immunofluorescent analysis of HepG2 cells, using SH3GLB1 antibody Catalog No:117143 at 1:25 dilution and Rhodamine-labeled goat anti-rabbit IgG (red).