

# SOLO antibody



Catalog Number: 115498

## Product name

SOLO antibody

## Immunogen

[Human SESTD1 Recombinant protein \(GST tag & His tag\)](#)

## Specificity

Human, Mouse, Rat; other species not tested.

## Antibody description

SOLO Rabbit Polyclonal antibody. Positive IP detected in mouse brain tissue. Positive WB detected in Jurkat cells, HepG2 cells, MCF-7 cells, mouse brain tissue, rat brain tissue. Positive IF detected in HepG2 cells. Observed molecular weight by Western-blot: 70 kDa

## Preparation

This antibody was obtained by immunization of SOLO recombinant protein (Accession Number: XM\_011512139). Purification method: Antigen Affinity purified.

## Formulation

PBS with 0.02% sodium azide and 50% glycerol pH 7.3.

## Storage

Store at -20°C. DO NOT ALIQUOT

## Clonality

Polyclonal

## Ig Type

Rabbit IgG

## Applications

ELISA, WB, IF, IP

## Dilutions

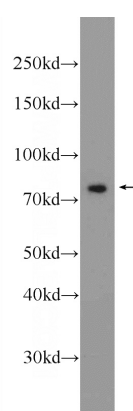
Recommended Dilution:

WB: 1:500-1:5000

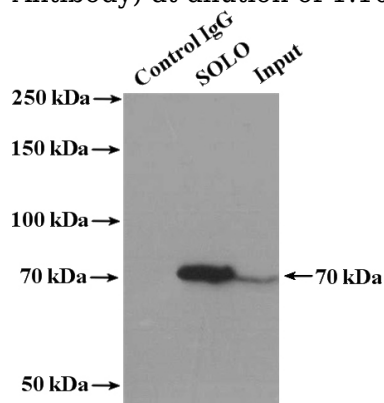
IP: 1:500-1:5000

IF: 1:20-1:200

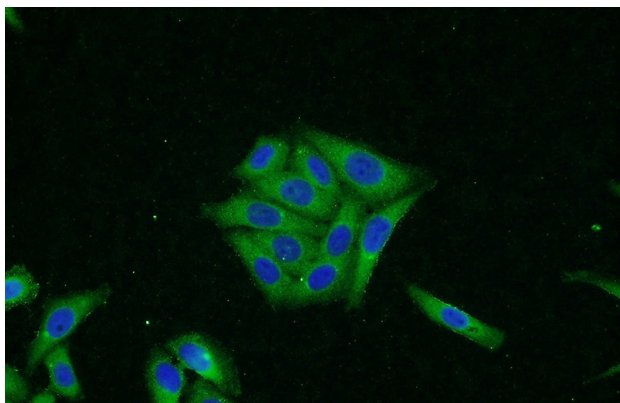
## Validations



Jurkat cells were subjected to SDS PAGE followed by western blot with Catalog No:115498(SESTD1 Antibody) at dilution of 1:1000



IP Result of anti-SESTD1 (IP:Catalog No:115498, 4ug; Detection:Catalog No:115498 1:1000) with mouse brain tissue lysate 3000ug.



Immunofluorescent analysis of HepG2 cells using Catalog No:115498(SESTD1 Antibody) at dilution of 1:50 and Alexa Fluor 488-conjugated AffiniPure Goat Anti-Rabbit IgG(H+L)