

# EPLIN antibody

Catalog Number: 110388

## Product name

EPLIN antibody

WB: 1:500-1:5000

IP: 1:200-1:2000

## Specificity

Human, Mouse, Rat; other species not tested.

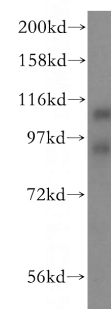
IHC: 1:20-1:200

IF: 1:10-1:100

## Antibody description

EPLIN Rabbit Polyclonal antibody. Positive IF detected in HepG2 cells. Positive IHC detected in human pancreas cancer tissue. Positive IP detected in mouse liver tissue. Positive WB detected in mouse liver tissue, human placenta tissue, PC-3 cells. Observed molecular weight by Western-blot: 90kd, 110kd

## Validations



## Preparation

This antibody was obtained by immunization of EPLIN recombinant protein (Accession Number: BC001247). Purification method: Antigen affinity purified.

mouse liver tissue were subjected to SDS PAGE followed by western blot with Catalog No:110388(LIMA1 antibody) at dilution of 1:500

## Formulation

PBS with 0.02% sodium azide and 50% glycerol pH 7.3.

## Storage

Store at -20°C. DO NOT ALIQUOT

## Clonality

Polyclonal

## Ig Type

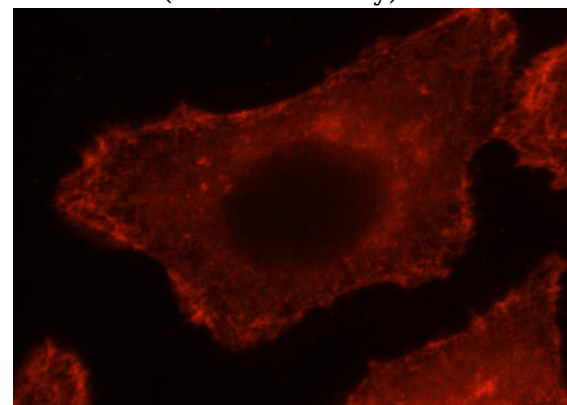
Rabbit IgG

## Applications

ELISA, WB, IF, IHC, IP

## Dilutions

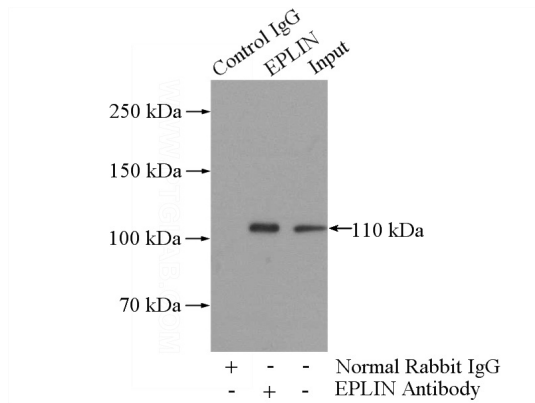
Recommended Dilution:



Immunofluorescent analysis of HepG2 cells, using LIMA1 antibody Catalog No:110388 at 1:25 dilution and Rhodamine-labeled goat anti-rabbit

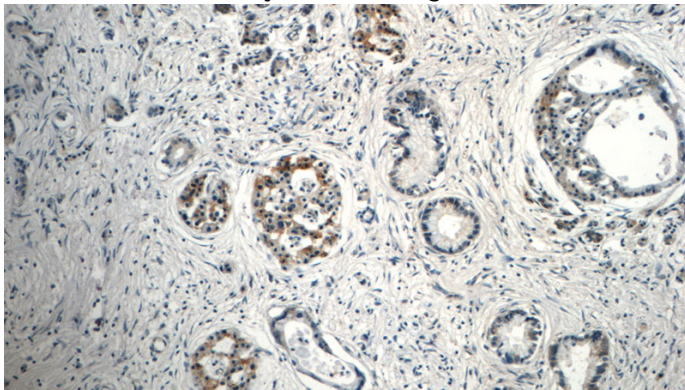
# EPLIN antibody

Catalog Number: 110388

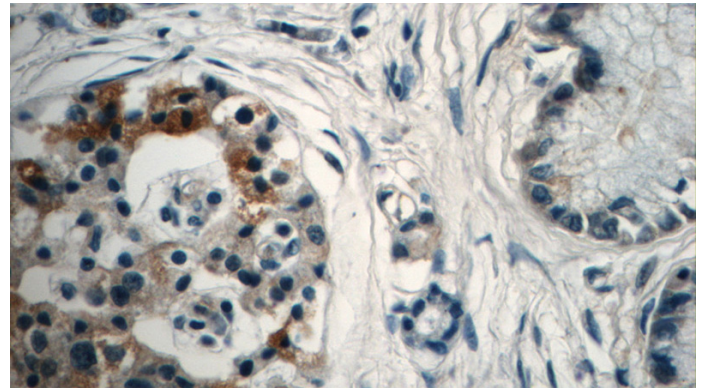


IgG (red).

IP Result of anti-LIMA1 (IP:Catalog No:110388, 4ug; Detection:Catalog No:110388 1:500) with mouse liver tissue lysate 4000ug.



Immunohistochemistry of paraffin-embedded human pancreas cancer tissue slide using Catalog No:110388(LIMA1 Antibody) at dilution of 1:50 (under 10x lens)



Immunohistochemistry of paraffin-embedded human pancreas cancer tissue slide using Catalog No:110388(LIMA1 Antibody) at dilution of 1:50 (under 40x lens)