

Hemoglobin epsilon antibody



Catalog Number: 111288

Product name

Hemoglobin epsilon antibody

Immunogen

[Human HBE1 Recombinant protein \(GST tag & His tag\)](#)

Specificity

Human, Mouse, Rat; other species not tested.

Antibody description

Hemoglobin epsilon Rabbit Polyclonal antibody. Positive FC detected in K-562 cells. Positive IHC detected in human placenta tissue. Positive WB detected in human placenta tissue, K-562 cells, mouse placenta tissue. Observed molecular weight by Western-blot: 12-16 kDa

Preparation

This antibody was obtained by immunization of Hemoglobin epsilon recombinant protein (Accession Number: NM_005330). Purification method: Antigen affinity purified.

Formulation

PBS with 0.1% sodium azide and 50% glycerol pH 7.3.

Storage

Store at -20°C. DO NOT ALIQUOT

Clonality

Polyclonal

Ig Type

Rabbit IgG

Applications

ELISA, WB, IHC, FC

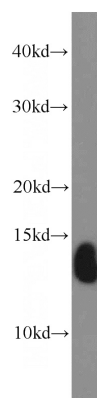
Dilutions

Recommended Dilution:

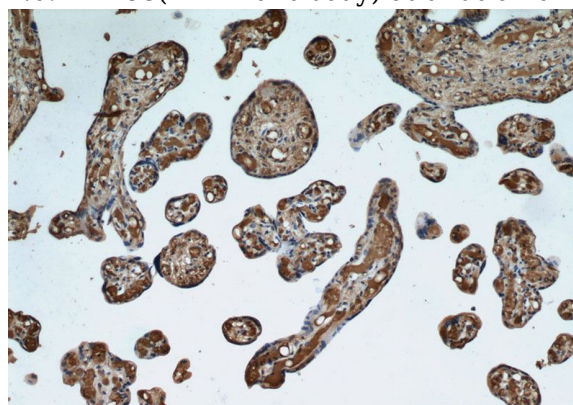
WB: 1:500-1:5000

IHC: 1:20-1:200

Validations



human placenta tissue were subjected to SDS PAGE followed by western blot with Catalog No:111288(HBE1 antibody) at dilution of 1:1000

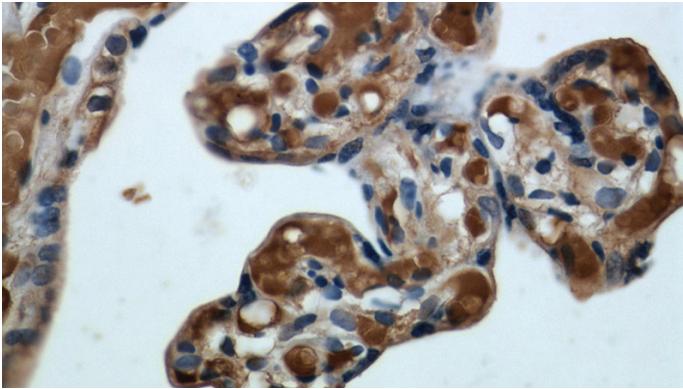


Immunohistochemical of paraffin-embedded human placenta using Catalog No:111288(HBE1 antibody) at dilution of 1:50 (under 10x lens)

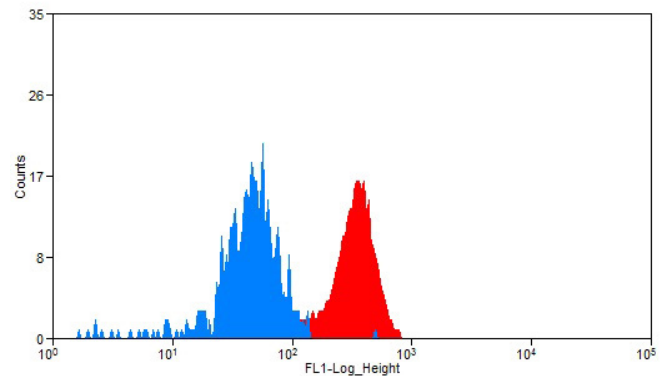
Hemoglobin epsilon antibody



Catalog Number: 111288



Immunohistochemical of paraffin-embedded human placenta using Catalog No:111288(HBE1 antibody) at dilution of 1:50 (under 40x lens)



1×10^6 K-562 cells were stained with 0.2ug HBE1 antibody (Catalog No:111288, red) and control antibody (blue). Fixed with 90% MeOH blocked with 3% BSA (30 min). Alexa Fluor 488-conjugated AffiniPure Goat Anti-Rabbit IgG(H+L) with dilution 1:1500.