

# Anti-Nrf2 Rabbit antibody



Catalog Number: 166988

## Product name

Anti-Nrf2 Rabbit antibody

## Specificity

Human, Mouse

## Antibody description

Nrf2 Rabbit polyclonal antibody

## Preparation

Antigen: The antiserum was produced against synthesized peptide derived from human Nrf2. AA range:556-605

## Formulation

PBS containing 50% glycerol, 0.5% BSA and 0.02% sodium azide.

## Storage

Store at 4°C short term. Store at -20°C long term. Avoid freeze / thaw cycle.

## Clonality

Polyclonal

## Ig Type

Rabbit IgG

## Applications

WB, IHC-P, ICC/IF, ELISA

## Dilutions

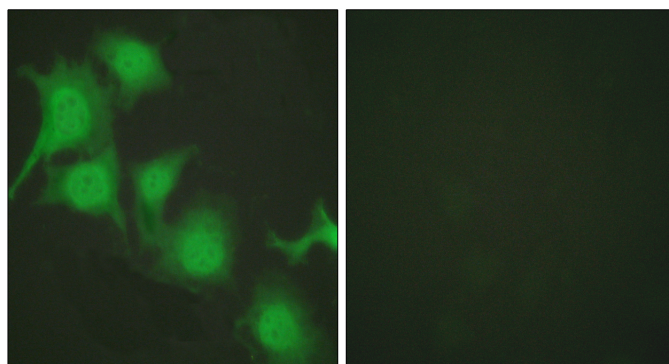
WB: 1/500 - 1/2000

IHC: 1/100 - 1/300

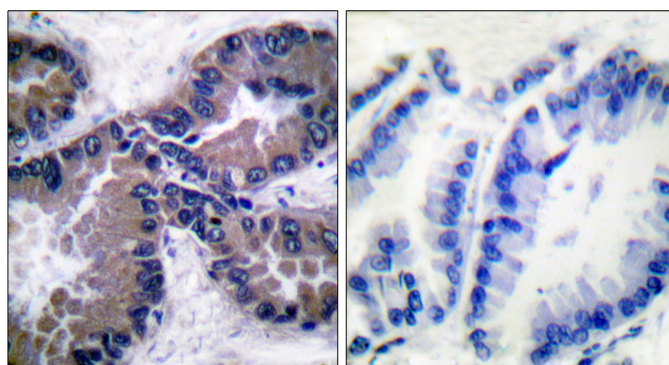
IF: 1/200 - 1/1000

ELISA: 1/40000

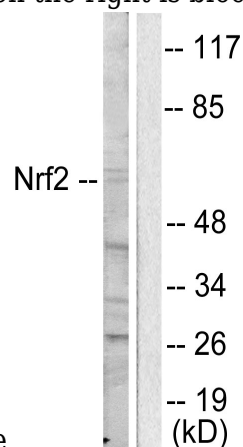
## Validations



Immunofluorescence analysis of HUVEC cells, using Nrf2 Antibody. The picture on the right is blocked with the synthesized peptide.



Immunohistochemistry analysis of paraffin-embedded human lung carcinoma tissue, using Nrf2 Antibody. The picture on the right is blocked



with the synthesized peptide.

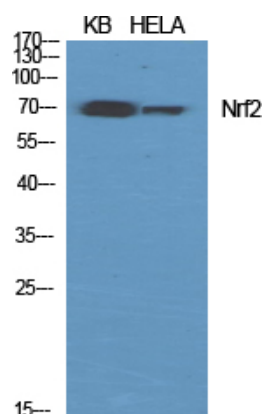
Western blot analysis of lysates from HUVEC cells, using Nrf2 Antibody. The lane on the right is blocked with the synthesized peptide.

# Anti-Nrf2 Rabbit antibody

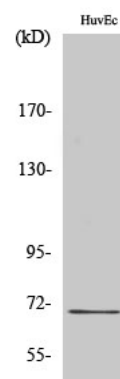


Catalog Number: 166988

---



Western Blot analysis of various cells using Nrf2 Polyclonal Antibody diluted at 1:1000



Western Blot analysis of HuvEc cells using Nrf2 Polyclonal Antibody diluted at 1:1000